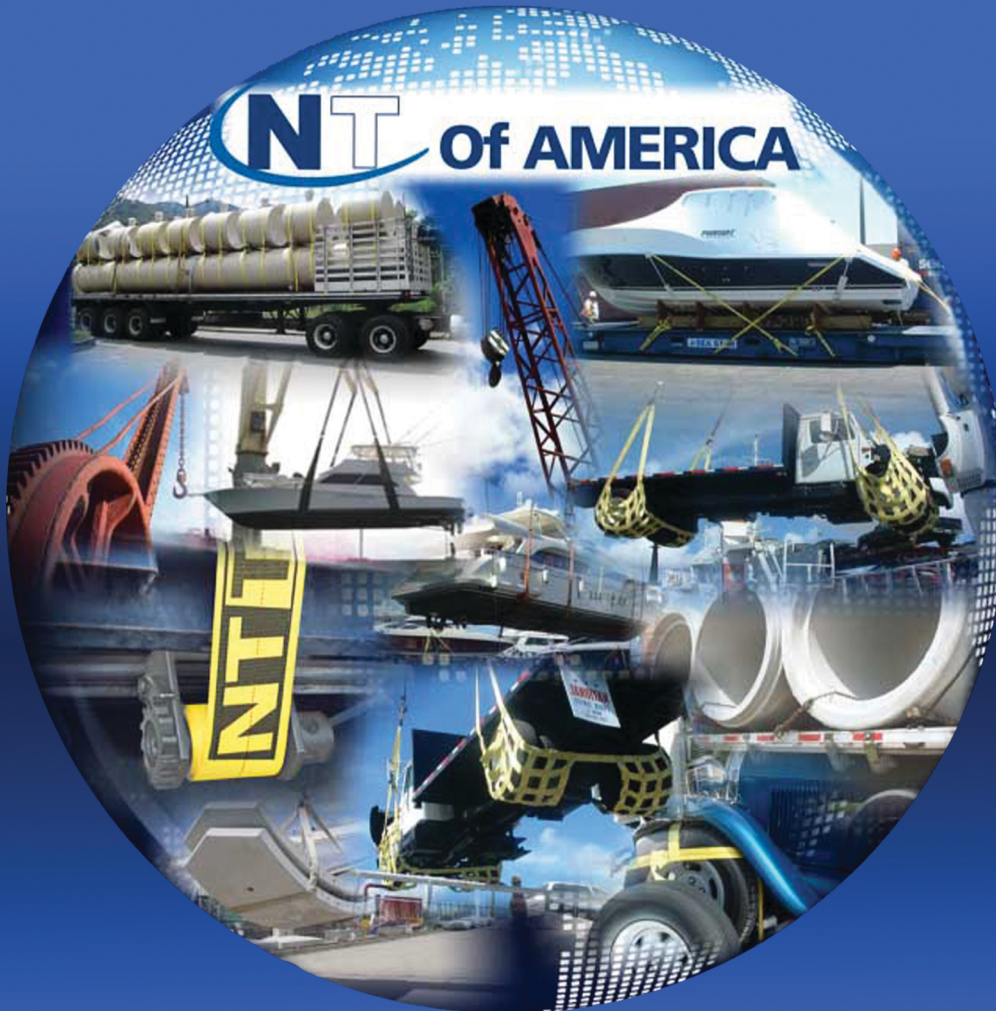


# CARGO RESTRAINT SYSTEMS

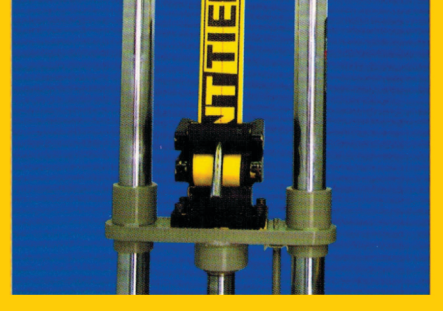
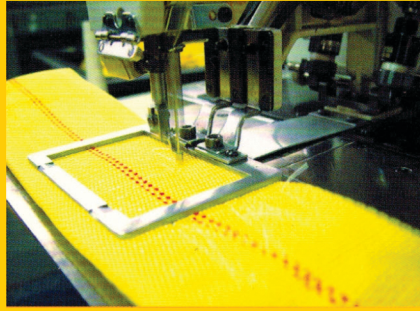
**NT** SLINGS



**NT** TIEDOWNS

A WORLD OF CARGO SAFE SOLUTIONS

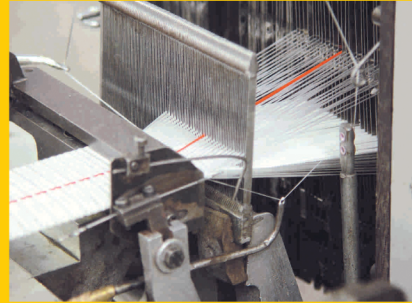




[www.ntofamerica.us](http://www.ntofamerica.us)



# TABLE OF CONTENTS



## WINCHES

WINCHES	4
SLIDING WINCH TRACKS	5
CORNER PROTECTORS	6
WINCH BARS	6

## FLATBED PRODUCTS

WINCH STRAP ASSEMBLIES	7 - 8
RATCHET STRAP ASSEMBLIES	9 - 10 - 11
BOAT SECURING ASSEMBLY	11

## UTILITY STRAPS

LIGHT STRAPS	12
--------------	----

## WEBBING

VEHICLE HEAVY DUTY STRAP	13
WEBBING	13

## LOGISTIC VAN PRODUCTS

CUSTOM NETS	14 - 15
E-TRACKS HORIZONTAL	16
E-DECKING SHORING BEAMS	16
WOOD BEAM SOCKET	16
CARGO BARS	17
RATCHET STRAP ASSEMBLIES FOR E-TRACK	17
CAM BUCKLE STRAPS FOR E-TRACK	17
E-TRACK FITTINGS	18
E-TRACKS VERTICAL	18
RUBBER TIES	18

## TOWING PRODUCTS

WHEEL DOLLY STRAPS	19
TOW STRAPS	19

## CHAINS, BINDERS AND HOOKS

WELDED CHAINS	20
CHAINS ASSEMBLIES	21
CHAIN BINDERS	22
EYE HOOKS	22 - 23
CLEVIS HOOKS	23

## HARDWARE

RATCHET BUCKLES	24 - 25
WIRE HOOKS	26
SNAP HOOKS	27
GRAB AND CHAIN ANCHOR HOOKS	27
FLAT HOOKS	28
VINYL S HOOKS	28
RINGS	29
OVERCENTER BUCKLES	29

## WEB SLINGS

SLINGS TYPE I AND II	30
SLINGS TYPE III AND IV	31
SLINGS TYPE V	32
ROUND SLINGS	33

## GENERAL INFORMATION

SCOPE	34
IMPORTANT DEFINITIONS	34
RATED LOAD CAPACITY	34
CALCULATION	34
USE AND CARE	34
DAMAGED SYNTHETIC TIEDOWN ASSEMBLY	35
WARNING	35
LIMITED WARRANTY	35



## WINCHES

All NT Winches are designed for securing cargo on all types of flatbed operations.

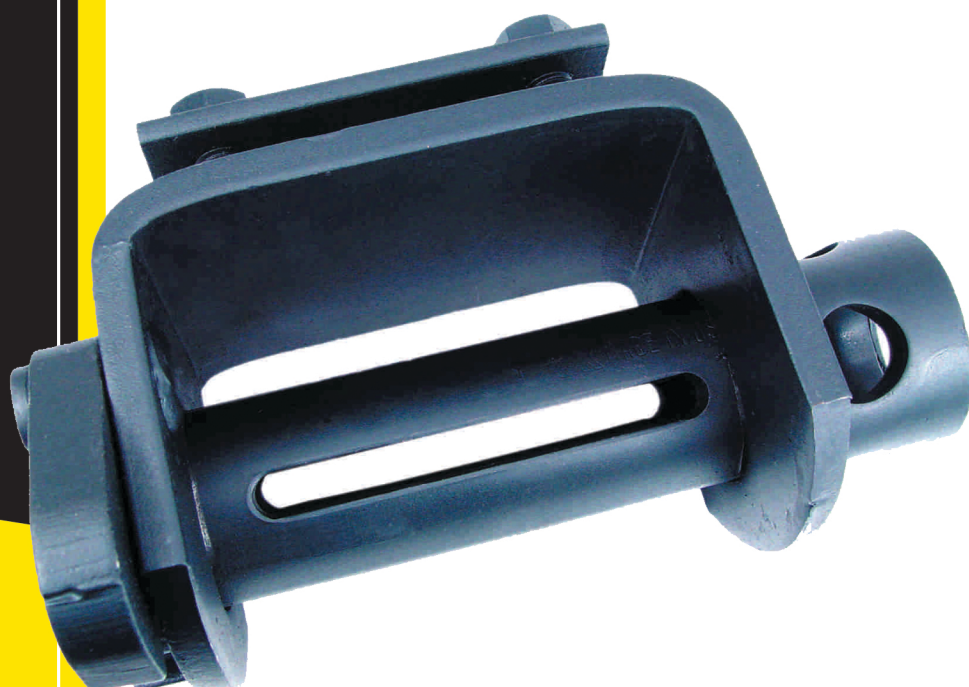
Our winches meet all standards from the Department of Transportation (DOT), California Highway Patrol (CHP) and Canadian 905 std. They also comply with Web Sling and Tie down Association (WSTDA) standards.

All winches are right hand models and can be used up to 4" width webbing. We offer weld-on, portable or slider versions in different types of winches, depending on our customers needs:

*Standard: Winches for bottom mounting.*

*Low Profile: Winches for side mounting.*

*Storable: Winches for bottom mounting allows extra capacity for storing up to 30' of webbing.*



### Low Profile Weld-On

**Part No. 60200101W04**  
**Breaking Strength:** 16200 Lbs/7350 Kgs  
**Working Load Limit:** 5400 Lbs/2450 Kgs  
**Weight:** 8.4 Lbs/3.8 Kgs



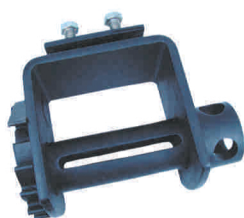
### Low Profile Portable

**Part No. 60200102W04**  
**Breaking Strength:** 16200 Lbs/7350 Kgs  
**Working Load Limit:** 5400 Lbs/2450 Kgs  
**Weight:** 9.0 Lbs/4.1 Kgs



### Standard Weld-On

**Part No. 60200201W04**  
**Breaking Strength:** 16200 Lbs/7350 Kgs  
**Working Load Limit:** 5400 Lbs/2450 Kgs  
**Weight:** 9.3 Lbs/4.2 Kgs



### Standard Portable

**Part No. 60200202W04**  
**Breaking Strength:** 16200 Lbs/7350 Kgs  
**Working Load Limit:** 5400 Lbs/2450 Kgs  
**Weight:** 9.5 Lbs/4.3 Kgs



### Storable Weld-On

**Part No. 60200301W04**  
**Breaking Strength:** 16200 Lbs/7350 Kgs  
**Working Load Limit:** 5400 Lbs/2450 Kgs  
**Weight:** 9.9 Lbs/4.5 Kgs





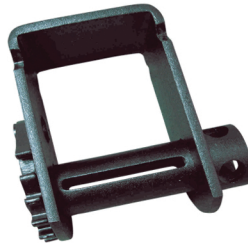
### Standard Slider

**Part No. 60200203W04**  
**Breaking Strength :** 16200 Lbs/7350 Kgs  
**Working Load Limit:** 5400 Lbs/2450 Kgs  
**Weight :** 9.5 Lbs/4.3 Kgs



### Standard Sliding Double "L"

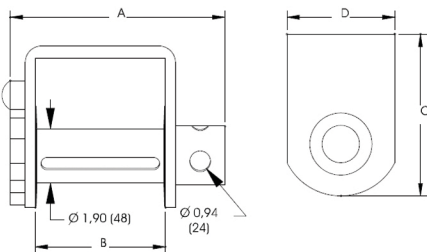
**Part No.60200206W04**  
**Breaking Strength :** 16200 Lbs/7350 Kgs  
**Working Load Limit:** 5400 Lbs/2450 Kgs  
**Weight :** 11 Lbs/5 Kgs



### Storable Slider

**Part No. 60200303W04**  
**Breaking Strength:** 16200 Lbs/7350 Kgs  
**Working Load Limit:** 5400 Lbs/2450 Kgs  
**Weight :** 11 Lbs/5 Kgs

## Winch Specifications



Part Number	A (inches)	A (cm)	B (inches)	B (cm)	C (inches)	C (cm)	D (inches)	D (cm)
60200202W04	7 <sup>7/8</sup>	20.0	4 <sup>3/4</sup>	12.1	6 <sup>1/2</sup>	16.7	3 <sup>7/8</sup>	8.9
60200101W04	8 <sup>1/4</sup>	21.0	4 <sup>7/8</sup>	12.3	4	10.0	4 <sup>1/4</sup>	10.7
60200102W04	8 <sup>1/4</sup>	21.0	5	12.7	5 <sup>1/4</sup>	13.4	4 <sup>1/4</sup>	10.8
60200201W04	8 <sup>1/4</sup>	21.0	4 <sup>7/8</sup>	12.4	6 <sup>1/2</sup>	16.4	3 <sup>5/8</sup>	9.1
60200301W04	7 <sup>7/8</sup>	20.0	4 <sup>7/8</sup>	12.4	5 <sup>1/2</sup>	14.0	3 <sup>5/8</sup>	9.2
60200203W04	7 <sup>7/8</sup>	20.0	4 <sup>7/8</sup>	12.3	5 <sup>7/8</sup>	15.0	4	10.1
60200205W02	4 <sup>7/8</sup>	12.3	2 <sup>1/8</sup>	5.4	4	10.0	3 <sup>1/2</sup>	9.0
60200303W04	8 <sup>1/4</sup>	21	4 <sup>7/8</sup>	12.4	6 <sup>1/2</sup>	16.4	3 <sup>5/8</sup>	9.1
60200206W04	7 <sup>7/8</sup>	20.0	4 <sup>7/8</sup>	12.3	5 <sup>7/8</sup>	15.0	4	10.1

## SLIDING WINCH TRACKS

*Sliding Winch Tracks allows the user to relocate winch on the optimal position for the specific load configuration. They are also very useful to prevent winch theft.*

*NT Sliding Winch Tracks are made of steel, and come in 6 ft. length.*

**Part No. 60900101L06**  
**Weight:** 34.2 Lbs/17.1 Kgs  
**Length:** 6 ft /1.83 mts



It is the owner's and user's responsibility to determine suitability of a product for any particular use.  
Remember, all web slings, assemblies, or systems are as strong as their weakest component including point of attachment.



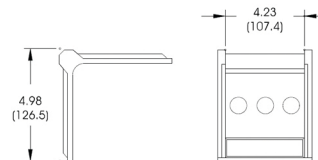
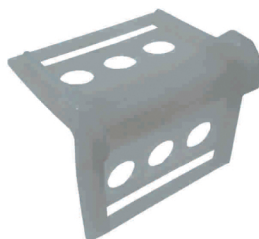
## CORNER PROTECTORS

Corner protectors are designed to protect both, straps and cargo.

NT offers a wide variety of protectors for multiple applications.

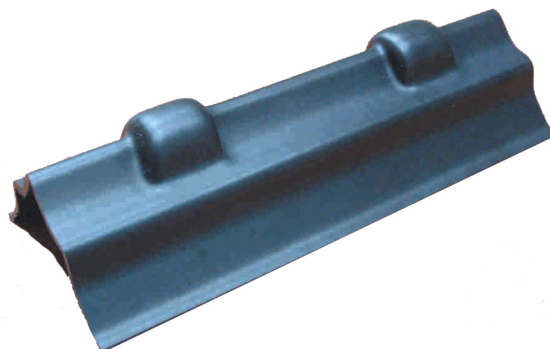
### Plastic Protector 2" - 4"

Part No. 60700101C04  
Weight: 0.25 Lbs/0.12 Kgs



### Long Corner Protector

Part No. 60700204C04  
Weight: 4 Ft/1.22 Mt



### V-Board Corner Protector (Heavy Duty)

Part No.60700206C02 8" x 8" x 24"  
Part No.60700206C03 9" x 9" x 36"  
Part No.60700206C07 9" x 9" x 78"



## WINCH BARS

All winch bars feature a knurled non-slip grooved grip handle and are tapered.  
All are angled at the end for easy operation, and are heat - treated for extra strength.

### Chrome Plated Bar



Part No. 60600101Q01  
Weight: 4.6 Lbs/2.9 Kgs

### Combination Chrome Plated Bar



Part No. 60600201Q01  
Weight: 5.7 Lbs/2.3 Kgs

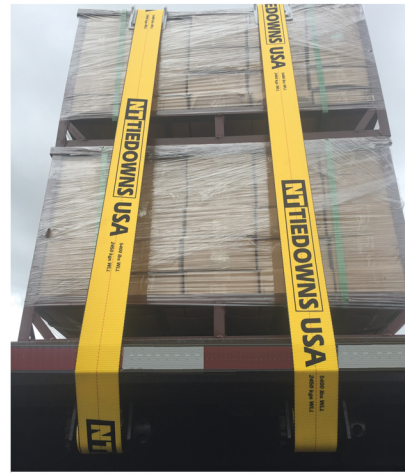


## WINCH STRAP ASSEMBLIES

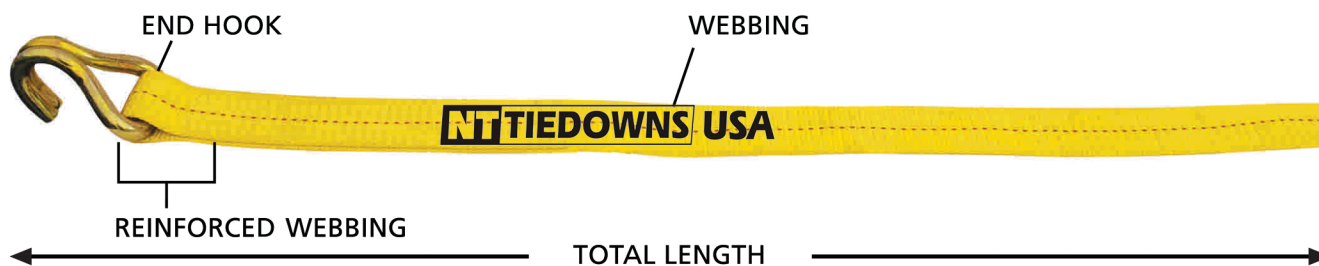
NT offers a wide variety of assemblies in 2", 3" and 4" winch straps, made of resin coated polyester for heavy duty and weather resistant conditions. We use high quality hardware that meets the requiring conditions of flatbed operations.

Our winches straps meet California Highway Patrol (CHP), and Department of Transportation (DOT) regulations; as well as Web Sling And Tie down Association (WSTDA) standard specifications for synthetic web tie downs.

NT 4" Winch Strap Assemblies are designed with an additional ply to reinforce the webbing at the end of the hook.



### Winch Strap Assembly Structure



#### 2" Winch Strap Assembly with Flat Hook

Breaking Strength: 10000 Lbs/4545 Kgs  
Working Load Limit: 3333 Lbs/1515 Kgs

\*Part No. 620A4450F27 x 27 ft  
\*Part No. 620A4450F30 x 30 ft



#### 2" Winch Strap Assembly with Wire Hook

Breaking Strength: 10000 Lbs/4545 Kgs  
Working Load Limit: 3333 Lbs/1515 Kgs

\*Part No. 620A4450H27 x 27 ft  
\*Part No. 620A4450H30 x 30 ft



#### 2" Winch Strap Assembly with Delta Hook

Breaking Strength: 10000 Lbs/4545 Kgs  
Working Load Limit: 3333 Lbs/1515 Kgs

\*Part No. 620A4450D27 x 27 ft  
\*Part No. 620A4450D30 x 30 ft



#### 2" Winch Strap Assembly with Grab Hook

Breaking Strength: 10000 Lbs/4545 Kgs  
Working Load Limit: 3333 Lbs/1515 Kgs

\*Part No. 620A4450G27 x 27 ft  
\*Part No. 620A4450G30 x 30 ft





## 2" Winch Strap Assembly with Chain Anchor

Breaking Strength: 10000 Lbs/4545 Kgs  
Working Load Limit: 3333 Lbs/1515 Kgs

\*Part No. 620A4450C27 x 27 ft  
\*Part No. 620A4450C30 x 30 ft



## 3" Winch Strap Assembly with Flat Hook

Breaking Strength: 15000 Lbs/6818 Kgs  
Working Load Limit: 5000 Lbs/2272 Kgs

Part No. 620A4475F27 x 27 ft  
Part No. 620A4475F30 x 30 ft



## 4" Winch Strap Assembly with Flat Hook

Breaking Strength: 16200 Lbs/7350 Kgs  
Working Load Limit: 5400 Lbs/2450 Kgs

\*\*Part No. 620A4410F27 x 27 ft  
\*\*Part No. 620A4410F30 x 30 ft  
\*\*Part No. 620A4410F35 x 35 ft

## 4" Winch Strap Assembly with Delta Ring

Breaking Strength: 16200 Lbs/7350 Kgs  
Working Load Limit: 5400 Lbs/2450 Kgs

\*\*Part No. 620A4410D27 x 27 ft  
\*\*Part No. 620A4410D30 x 30 ft



## 4" Winch Strap Assembly with Grab Hook

Breaking Strength: 16200 Lbs/7350 Kgs  
Working Load Limit: 5400 Lbs/2450 Kgs

\*\*Part No. 620A4410G27 x 27 ft  
\*\*Part No. 620A4410G30 x 30 ft



## 4" Winch Strap Assembly with Twisted Loop

Breaking Strength: 16200 Lbs/7350 Kgs  
Working Load Limit: 5400 Lbs/2450 Kgs

\*\*Part No. 620A4410S27 x 27 ft  
\*\*Part No. 620A4410S30 x 30 ft



## 4" Winch Strap Assembly with Chain Anchor

Breaking Strength: 16200 Lbs/7350 Kgs  
Working Load Limit: 5400 Lbs/2450 Kgs

\*\*Part No. 620A4410C27 x 27 ft  
\*\*Part No. 620A4410C30 x 30 ft



## RATCHET STRAP ASSEMBLIES

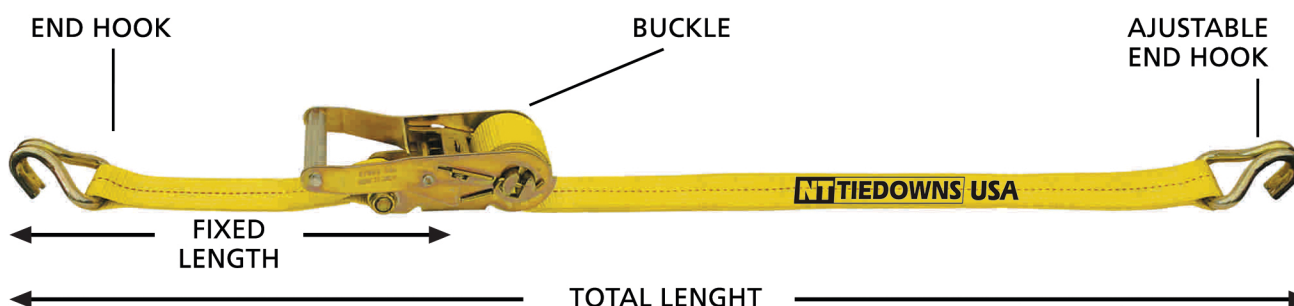
NT's ratchet buckle strap assemblies are the industry standard, and they are designed to handle most types of tie down applications.

Our ratchet strap assembly complies with all Department of Transportation (DOT), California Highway Patrol (CHP) and Web Sling And Tie Down Association (WSTDA) standards.

All straps have an 18" fixed end as standard. This puts the ratchet buckle in optimum position over each end of the trailer for drivers tensioning.



### RATCHET STRAP STRUCTURE



#### 2" Low Breaking Strength Ratchet Strap Assembly with Wire Hook

Breaking Strength: 4500 Lbs/2045 Kgs  
Working Load Limit: 1500 Lbs/680 Kgs

Part No. 654Z7150H06 x 6 ft  
Part No. 654Z7150H21 x 21 ft  
Part No. 654Z7150H27 x 27 ft  
Part No. 654Z7150H30 x 30 ft



#### 2" Wide Handle Ratchet Strap Assembly with Wire Hook

Breaking Strength: 10000 Lbs/4545 Kgs  
Working Load Limit: 3333 Lbs/1515 Kgs

\*Part No. 652A4450H27 x 27 ft  
\*Part No. 652A4450H30 x 30 ft  
\*Part No. 652A4450H35 x 35 ft



## 2" Wide Handle Ratchet Strap Assembly with Flat Hook

Breaking Strength: 10000 Lbs/4545 Kgs  
Working Load Limit: 3333 Lbs/1515 Kgs

\*Part No. 652A4450F27 x 27 ft  
\*Part No. 652A4450F30 x 30 ft  
\*Part No. 652A4450F35 x 35 ft



## 2" Wide Handle Ratchet Strap Assembly with Delta Ring

Breaking Strength: 10000 Lbs/4545 Kgs  
Working Load Limit: 3333 Lbs/1515 Kgs

\*Part No. 652A4450D27 x 27 ft  
\*Part No. 652A4450D30 x 30 ft



## 2" Wide Handle Ratchet Strap Assembly with Chain Anchor

Breaking Strength: 10000 Lbs/4545 Kgs  
Working Load Limit: 3333 Lbs/1515 Kgs

\*Part No. 652A4450C27 x 27 ft  
\*Part No. 652A4450C30 x 30 ft



## 2" Long Wide Handle Ratchet Strap Assembly with Wire Hook

Breaking Strength: 10000 Lbs/4545 Kgs  
Working Load Limit: 3333 Lbs/1515 Kgs

\*Part No. 653A4450H27 x 27 ft  
\*Part No. 653A4450H30 x 30 ft



## 2" Long Wide Handle Ratchet Strap Assembly with Flat Hook

Breaking Strength: 10000 Lbs/4545 Kgs  
Working Load Limit: 3333 Lbs/1515 Kgs

\*Part No. 653A4450F27 x 27 ft  
\*Part No. 653A4450F30 x 30 ft



\* Also available in 12000 Lbs/5450 Kg webbing

It is the owner's and user's responsibility to determine suitability of a product for any particular use.  
Remember, all web slings, assemblies, or systems are as strong as their weakest component including point of attachment.

### 3" Standard Ratchet Strap Assembly with Flat Hook

Breaking Strength: 15000 Lbs/6818 Kgs  
Working Load Limit: 5000 Lbs/2272 Kgs

Part No. 651A4475F27 x 27 ft  
Part No. 651A4475F30 x 30 ft



### 4" Standard Ratchet Strap Assembly with Flat Hook

Breaking Strength: 16200 Lbs/7350 Kgs  
Working Load Limit: 5400 Lbs/2450 Kgs

\*\*Part No. 651A4410F27 x 27 ft  
\*\*Part No. 651A4410F30 x 30 ft



### 4" Standard Ratchet Strap Assembly with Delta Ring

Breaking Strength: 16200 Lbs/7350 Kgs  
Working Load Limit: 5400 Lbs/2450 Kgs

\*\*Part No. 651A4410D27 x 27 ft  
\*\*Part No. 651A4410D30 x 30 ft



### 4" Standard Ratchet Strap Assembly with Chain Anchor

Breaking Strength: 16200 Lbs/7350 Kgs  
Working Load Limit: 5400 Lbs/2450 Kgs

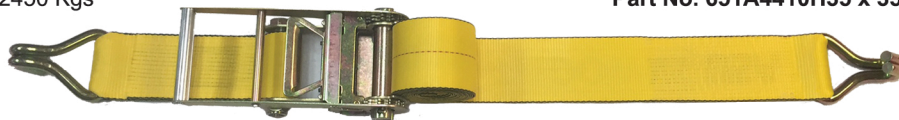
\*\*Part No. 651A4410C27 x 27 ft  
\*\*Part No. 651A4410C30 x 30 ft



### 4" Standard Ratchet Strap Assembly with Wire Hook

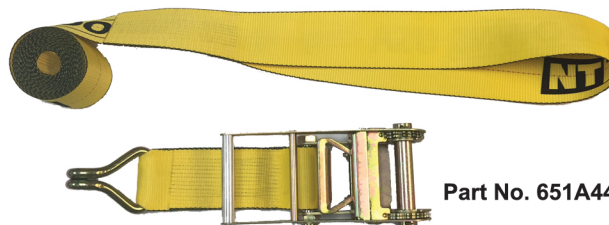
Breaking Strength: 16200 Lbs/7350 Kgs  
Working Load Limit: 5400 Lbs/2450 Kgs

Part No. 651A4410H30 x 30 ft  
Part No. 651A4410H35 x 35 ft



### 4" Standard Ratchet Strap Assembly with Wire Hook and Loop

Breaking Strength: 16200 Lbs/7350 Kgs  
Working Load Limit: 5400 Lbs/2450 Kgs



Part No. 651A4410S30 x 30 ft

\* Also available in 12000 Lbs/5450 Kgs webbing

\*\* Also available in 20000 Lbs/9080 Kgs webbing

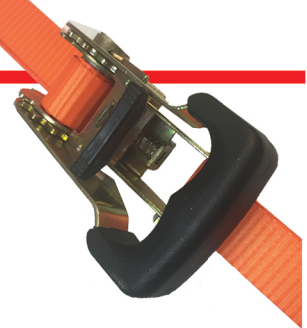
It is the owner's and user's responsibility to determine suitability of a product for any particular use.  
Remember, all web slings, assemblies, or systems are as strong as their weakest component including point of attachment.



## UTILITY STRAPS

NT offers a complete line of utility straps in 1" with breaking strengths ranging from 1500 to 3000 lbs.

We offer a wide variety of hook options, ratchet buckles and cam buckles, for home or industrial use. Our utility straps can be used on pick-up trucks, utility trailers, car top racks, boat trailers or anywhere a light duty tie-down is needed.



### 1" Cam Buckle Strap Assembly with Vinyl S Coated Hooks

Breaking Strength: 600 Lbs/275 Kgs  
Working Load Limit: 200 Lbs/95 Kgs

Part No. 661Z5425J06 x 6 ft  
Part No. 661Z5425J09 x 9 ft  
Part No. 661Z5425J12 x 12 ft



### 1" Wide Handle Ratchet Strap Assembly with Vinyl S Coated Hooks

Breaking Strength: 3000 Lbs/1000 Kgs  
Working Load Limit: 1000 Lbs/330 Kgs

Part No. 657A8425J06 x 6 ft  
Part No. 657A8425J10 x 10 ft  
Part No. 657A8425J12 x 12 ft  
Part No. 657A8425J15 x 15 ft



### 1" Wide Handle Ratchet Strap Assembly with Wire Hooks

Breaking Strength: 3000 Lbs/1000 Kgs  
Working Load Limit: 1000 Lbs/330 Kgs

Part No. 657Z5425H06 x 6 ft  
Part No. 657Z5425H09 x 9 ft  
Part No. 657Z5425H12 x 12 ft  
Part No. 657Z5425H15 x 15 ft  
Part No. 657Z5425H21 x 21 ft



For custom lengths in both fixed and overall. other end hardware or ratchet buckle.  
Please contact our sales representative for details. Minimum orders apply.

It is the owner's and user's responsibility to determine suitability of a product for any particular use.  
Remember, all web slings, assemblies, or systems are as strong as their weakest component including point of attachment.

# 1-1/16" Rubber Wide Handle Ratchet Strap Assembly with Vinyl S Coated Hooks

Breaking Strength: 3000 Lbs/1000 Kgs  
Working Load Limit: 1000 Lbs/330 Kgs

Part No. 657Z5425J12 x 12 ft  
Part No. 657Z5425J15 x 15 ft  
Part No. 657Z5425J21 x 21 ft













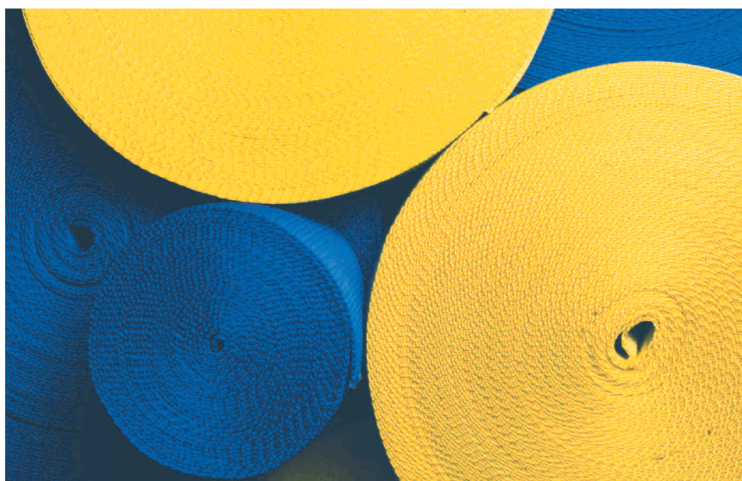
## WEBBING

NT offers a broad line of webbing, made of high tenacity polyester and nylon, giving you a range of choices to match your tie down application. The webbing vary according to strength rating, material, thickness and width as shown in the chart. Our webbing is treated for extra strength and durability.

We Offer webbing in different materials:

- Polyester: Is well suited for tie downs, because of its high strength, low elongation and resistant to abrasion.
- Nylon: It has elongation characteristics and high strength. It is suitable for sling and tow straps, but less desirable for heavy-duty tie downs. It displays good UV and alkaline resistance.

PART No.	WIDTH		MATERIAL	BREAKING STRENGTH		WLL		COLOR
	MM	INCHES		Lb.	Kgs.	Lb.	Kgs.	
334RS225N11	1	25	Nylon	2500	1135	1211	378	Red 
334ZS425N11	1	25	Nylon	2500	1135	1211	378	Blue 
330Z7202P11	2	50	Polyester	5000	2270	1666	757	Light Blue 
331A4202P11	2	50	Polyester	10000	4540	3333	1513	Yellow 
332A4202P11	2	50	Polyester	11000	4994	3666	1664	Yellow 
333A4202P11	2	50	Polyester	12000	5450	4000	1816	Yellow 
331A4203P11	3	75	Polyester	14000	6353	4666	2116	Yellow 
331A4204P11	4	100	Polyester	18000	8170	6000	2723	Yellow 
333A4204P11	4	100	Polyester	20000	9080	6666	3026	Yellow 
33SA4201P11	1	25	Polyester	3200	1450	1066	485	Yellow 



COLOR	CODES
42	Yellow
46	Beige
51	Black
52	Red
54	Blue
72	Light blue
53	Green
70	Grey

We manufacture customized webbing;  
print your company name and logo.  
Please contact our- sales representative  
for details.  
Minimum orders apply.



## LOGISTIC VAN PRODUCTS

*Our line of logistic van products are designed for most interior van cargo restraint applications.*



*Our wide variety of products allow our customers a large range of different operations and a better use of van capacity, always through safe application.*

*Logistic nets allow our customers to separate the load into different deliveries preventing damage to the packages.*

*For custom sizes and especial hardware please contact our sales representative.*

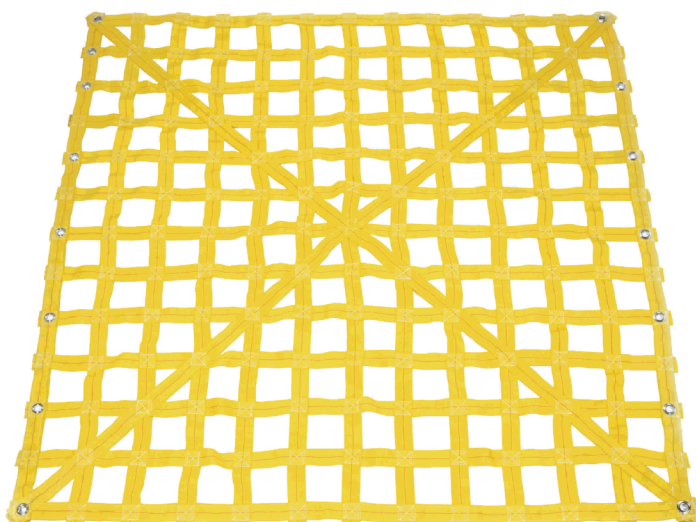


It is the owner's and user's responsibility to determine suitability of a product for any particular use. Remember, all web slings, assemblies, or systems are as strong as their weakest component including point of attachment.

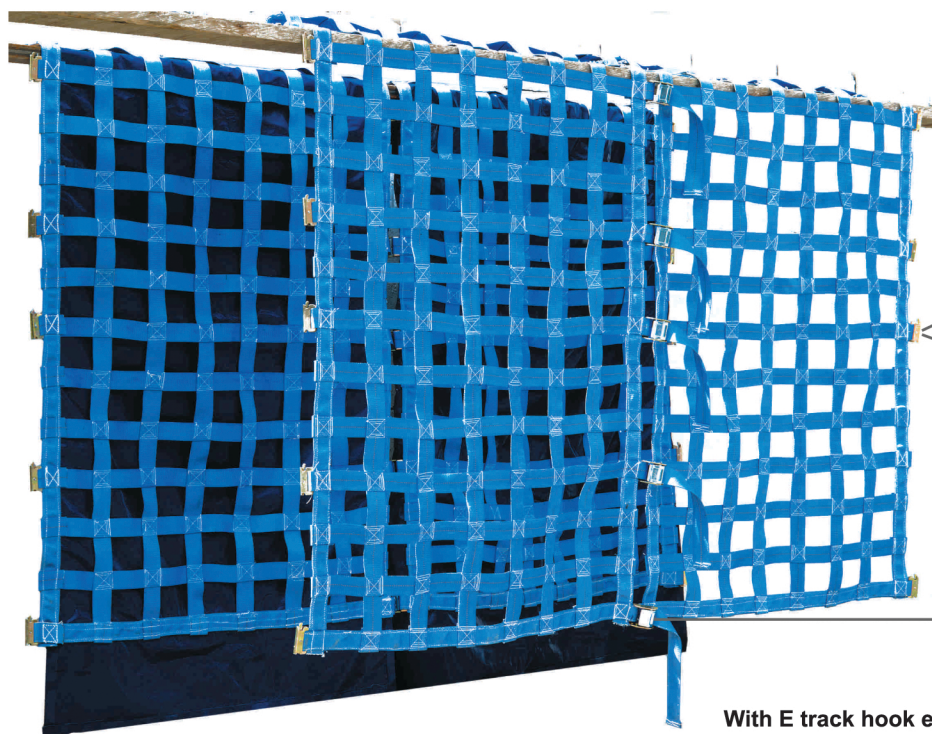
## CUSTOM NETS

*NT solutions are for all trailers and particular vans.*

*Custom nets offer support for various sizes and shaped packages. They are individually tailored to fit any trailer and van loading condition to assure maximum effectiveness when transporting a load securely.*



Part No. 689A4480P80



Or

**With E track hook ends**  
Part No. 681Z7182E66  
Part No. 682Z7182E66 with sailcloth

**With wire hook ends**  
Part No. 681Z7182H66  
Part No. 682Z7182H66 with sailcloth

*Logistic van nets can be tailored in different sizes and using different types of hardware.*

It is the owner's and user's responsibility to determine suitability of a product for any particular use. Remember, all web slings, assemblies, or systems are as strong as their weakest component including point of attachment.



## LOGISTIC E-TRACK SERIES

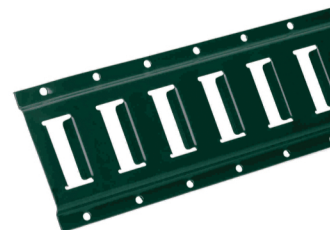
Designed to provide attachment point for a variety of interior cargo control systems NT E-TRACK are offered in 10 ft length. To prevent corrosion a primer coating is standard; we also offer galvanized finish. E-TRACK is designed for E or A end fittings, beam sockets and decking/shoring beams. They can be attached by screws, revest or by welding.

### E Track Horizontal Painted

Part No. 60900202L10

Weight: 16 Lbs/7.3 Kgs

Length: 10 ft/3.05 mts

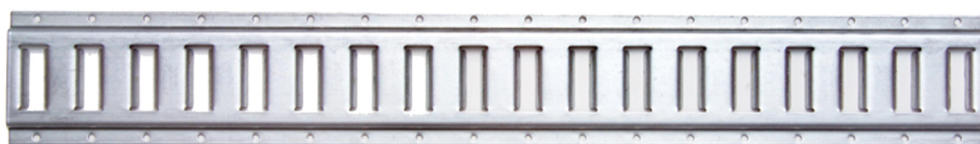


### E Track Horizontal Galvanized

Part No. 60900202L10G

Weight: 16 Lbs/7.3 Kgs

Length: 10 ft/3.05 mts



## E DECKING SHORING BEAMS

NT DECKING SHORING BEAMS provide the best strength to weight ratio and also great corrosion resistance. They are designed to hold WLL 2000 Lb. uniformly distributed.

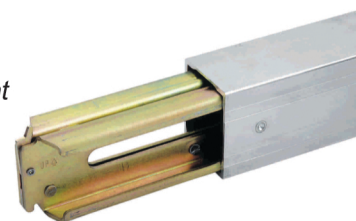
### Standard Duty E Decking / Shoring Beam

Part No. 61000101E01

Working Load Limit: 2000 Lbs/908 Kgs

Weight: 23.1 Lbs/10.5 Kgs

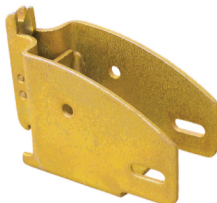
Adjusts from: 90" to 100"



### Wood Beam Socket

Part No. 60501001G02

Weight: 0.7 Lbs/0.32 Kgs



### 2" Rope Tie Off with E Fitting

Part No. 6257Z7150E01

Breaking strength: 3000 Lbs/1362 Kgs

Working Load Limit: 1000 Lbs/455 Kgs

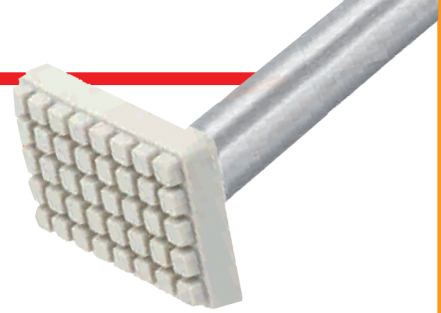


The rate capacity depends on lumber quality.

## CARGO BARS

NT CARGO BARS can be easily and quickly installed at any point in the van or trailer. The durable neoprene swivel feet provide excellent grip even at low temperatures.

All bars have an adjustment range from 89" to 105".



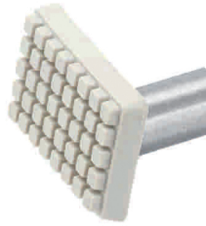
### Steel Ratcheting Cargo Bar

Part No. 61100201A01  
Weight: 8.5 Lbs/3.9 Kgs



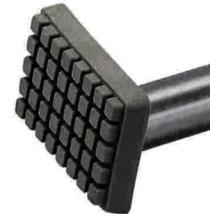
### Rubber Feet 2" x 4"

Part No. 61100801A02



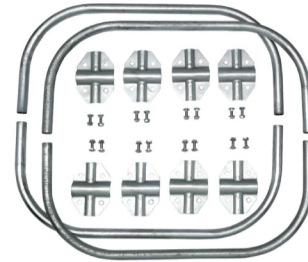
### Rubber Feet 2" x 4"

Part No. 61100801A04






### Hoop Set for Cargo and Load Jack Bars

Part No. 61100401A01  
Weight: 10 Lbs/45 Kgs




### 2" Logistic Ratchet Strap with E Fitting

Part No. 654L4750E12 x 12 ft  Yellow 12 ft  
Part No. 654L3350E16 x 16 ft  Gray 16 ft  
Part No. 654L2350E20 x 20 ft  Blue 20 ft

Breaking strength: 4500 Lbs/2045 Kgs  
Working Load Limit: 1500 Lbs/680Kgs



### 2" Logistic Cam Buckle Strap with E Fitting

Part No. 662L4450E12 x 12 ft  Yellow 12 ft  
Part No. 662L3350E16 x 16 ft  Gray 16 ft  
Part No. 662L4750E20 x 20 ft  Blue 20 ft

Breaking strength: 2500 Lbs/1136 Kgs  
Working Load Limit: 833 Lbs/ 378Kgs



It is the owner's and user's responsibility to determine suitability of a product for any particular use. Remember, all web slings, assemblies, or systems are as strong as their weakest component including point of attachment.

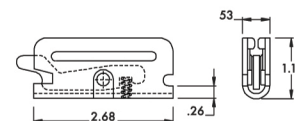
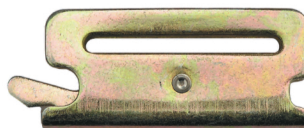


## E TRACK FITTINGS

*E track fittings are efficient and fast tie down method on interior van application.  
NT E Track Fittings are made to fit our tracks securely.*

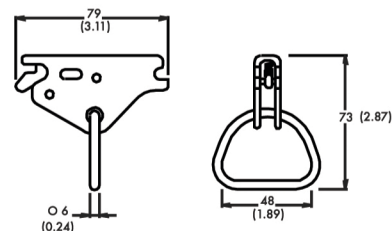
### 2" E Fitting

**Part No. 60500801G02**  
**Breaking Strength:** 4500 Lbs/2045 Kgs  
**Working Load Limit:** 1500 Lbs/680 Kgs  
**Weight:** 0.20 Lbs/0.10 Kgs



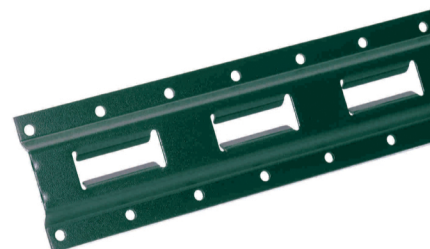
### 2" E Fitting w/ D Ring

**Part No. 60500901G02**  
**Breaking Strength:** 6000 Lbs/2730 Kgs  
**Working Load Limit:** 2000 Lbs/910 Kgs  
**Weight:** 0.28 Lbs/0.14 Kgs



### E Track Vertical Painted

**Part No. 60900302L10**  
**Weight:** 13.5 Lbs/6.1 Kgs  
**Length:** 10 Ft/3.05 Mts



## RUBBER TIES

*NT Rubber straps have exceptional tensile strength, stretch recovery; providing constant rubber tarp straps tension.*



Part No.		Overall	Installed	
			Min	Max
613N5110U01	10"	14	15	19
613N5115U01	15"	19	21	30
613N5121U01	21"	25	28	42
613N5131U01	31"	35	39	62
613N5141U01	41"	45	50	82

Ask our customer representative about consumer products packing for this selection

It is the owner's and user's responsibility to determine suitability of a product for any particular use.  
Remember, all web slings, assemblies, or systems are as strong as their weakest component including point of attachment.

## TOWING PRODUCTS

NT offers a full line of towing systems required for a secure operation.

### Adjustable Wheel Dolly Towing Straps

NT offers a complete line of wheel dolly straps, that safely secure many kinds of vehicles to trailers for transportation.



Part No. 672A4250H13 X 13"  
Part No. 672A4250H14 X 14"  
Part No. 672A4250H15 X 15"  
Part No. 672A4250H16 X 16"

Breaking Strength: 10000 Lbs/4545 Kgs  
Working Load Limit: 3333 Lbs/1515 Kgs



Part No. 671A4250H13 X 13"  
Part No. 671A4250H14 X 14"  
Part No. 671A4250H15 X 15"  
Part No. 671A4250H16 X 16"

Breaking Strength: 10000 Lbs/4545 Kgs  
Working Load Limit: 3333 Lbs/1515 Kgs



With Rubber Blocks  
Part No. 673A4250H01  
Part No. 673A4450S10  
Part No. 673A4450S12  
Part No. 673A8450H01SI

Breaking Strength: 10000 Lbs/4545 Kgs  
Working Load Limit: 3333 Lbs/1515 Kgs

## 2" TOW STRAPS

### 2" Tow Strap with Hooks

Part No. 69314A50P15 x 15 ft  
Part No. 69314A50P20 x 20 ft  
Breaking strength: 10000 Lbs/4540 Kgs



### 2" Tow Strap with Loops

Part No. 69300A50P20 x 20 ft  
Breaking strength: 20000 Lbs/9080 Kgs



For more selection of consumer products, please consult our consumer products catalog or our website [www.ntofamerica.us](http://www.ntofamerica.us)

It is the owner's and user's responsibility to determine suitability of a product for any particular use.  
Remember, all web slings, assemblies, or systems are as strong as their weakest component including point of attachment.

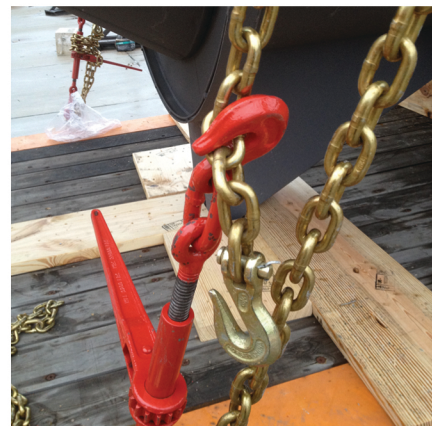


## CHAINS

### Welded Chains

NT Welded Chains are designed for tiedown applications. Do not use for overhead lifting.

They are manufactured from special analysis steel, engineered for a superior combination of strength and durability; our chains meet NACM 90 chain specs



### Proof Coil Chain NACM 90 (G30)



Part No.	Drum Size		Nominal Size (IN)	Material Diameter (IN)	Working Load Limit (max)		Proof Test (min)		Breaking Force min		Inside Length (max) (IN)	Inside Width (min) (IN)
	(Ft)	(Mts)			(Kgs)	(Lbs)	(KN)	(Lbs)	(KN)	(Lbs)		
61603005Z11	850	243	3/16	0.217	365	800	7.2	1500	14.4	3200	0.98	0.30
61603006Z11	800	248	1/4	0.276	580	1300	11.6	2600	23.1	5200	1.24	0.38
61603008Z11	550	167	5/16	0.331	860	1900	16.9	3800	33.8	7600	1.29	0.44
61603010Z11	400	121	3/8	0.394	1200	2650	23.6	5300	47.1	10600	1.38	0.55
61603013Z11	200	60.9	1/2	0.512	2030	4500	40	9000	80.0	18000	1.79	0.72

### High Test Chain NACM 90 (G43)



Part No.	Drum Size		Nominal Size (IN)	Material Diameter (IN)	Working Load Limit (max)		Proof Test (min)		Breaking Force min		Inside Length (max) (IN)	Inside Width (min) (IN)
	(Ft)	(Mts)			(Kgs)	(Lbs)	(KN)	(Lbs)	(KN)	(Lbs)		
61604306Z11	800	243	1/4	0.276	1180	2800	17.3	3900	34.6	7800	1.24	0.38
61604308Z11	550	167	5/16	0.343	1770	3900	26.0	5850	52	11700	1.29	0.44
61604310Z11	400	121	3/8	0.406	2450	5400	36.0	8100	72	16200	1.38	0.55
61604313Z11	200	60.9	1/2	0.531	4170	9200	61.31	13800	122.6	27600	1.79	0.72
61604316Z11	150	45.7	5/8	0.630	5910	13000	86.5	19500	173	39000	2.20	0.79

### Transport Chain (G70) meets all industry standards (FMCSA, DOT and NACM 90)



Part No.	Drum Size		Nominal Size (IN)	Material Diameter (IN)	Working Load Limit (máx)		Proof Test (min)		Breaking Force min		Inside Length (max) (IN)	Inside Width (min) (IN)
	(Ft)	(Mts)			(kgs)	(lbs)	(KN)	(lbs)	(KN)	(lbs)		
61607006Z11	800	243	1/4	0.281	1430	3150	28	6300	56	12600	1.24	0.38
61607008Z11	550	167	5/16	0.343	2130	4700	41.6	9400	83.5	18800	1.32	0.48
61607010Z11	400	121	3/8	0.406	2990	6600	58.7	13200	117.4	26400	1.38	0.55
61607013Z11	200	60.9	1/2	0.531	5130	11300	100.4	22600	200.8	45200	1.79	0.72
61607016Z11	150	45.7	5/8	0.630	7170	15800	140.4	31600	280.8	63200	2.20	0.79

\*  **WARNING:** These chains are NOT for overhead lifting

## WELDED CHAINS ASSEMBLIES

NT Welded Chains Assemblies are manufactured with high quality components and meet all industry standards and regulations including FMCSA, DOT and NACM.

### Grade 43 Binder Chain Assemblies (Carbon Steel)



Part No.	Size of Chain	Clevis Hooks Carbon Steel		Working Load Limit		Length		Weight	
		Part No.	Qt	(Lbs)	(Kgs)	(Ft)	(Mts)	(Lbs)	(Kgs)
61742108Z16	5/16"	61500108G01	2	3900	1772	16	4.87	16.8	7.63
61742108Z20	5/16"	61500108G01	2	3900	1772	20	6.09	20.8	9.45
61742108Z25	5/16"	61500108G01	2	3900	1772	25	7.62	25.8	11.7
61742110Z14	3/8"	61500110G01	2	5400	2454	14	4.26	21.0	9.54
61742110Z16	3/8"	61500110G01	2	5400	2454	16	4.87	22.0	10.0
61742110Z20	3/8"	61500110G01	2	5400	2454	20	6.09	30.0	13.6
61742110Z25	3/8"	61500110G01	2	5400	2454	25	7.62	37.0	16.8

Note: Available in other sizes. Other lengths upon request.

### Grade 70 Binder Chain Assemblies (High Carbon Steel)

Transport Chain (G70) meets all industry standards (FMCSA, DOT and NACM)



Part No.	Size of Chain	Clevis Hooks Carbon Steel		Working Load Limit		Length		Weight	
		Part No.	Qt	(Lbs)	(Kgs)	(Ft)	(Mts)	(Lbs)	(Kgs)
61772108Z16	5/16"	61500208G01	2	4700	2136	16	4.87	17.2	7.81
61772108Z20	5/16"	61500208G01	2	4700	2136	20	6.09	21.2	9.63
61772108Z25	5/16"	61500208G01	2	4700	2136	25	7.62	26.2	11.9
61772108Z30	5/16"	61500208G01	2	4700	2136	30	9.14	31.5	14.3
61772110Z16	3/8"	61500210G01	2	6600	3000	16	4.87	24.9	11.3
61772110Z20	3/8"	61500210G01	2	6600	3000	20	6.09	32.9	14.9
61772110Z25	3/8"	61500210G01	2	6600	3000	25	7.62	40.0	18.1
61772110Z30	3/8"	61500210G01	2	6600	3000	30	9.14	48.4	22.0

Note: Available in other sizes. Other lengths upon request.

For special assemblies please contact our customer service representative. Minimum orders apply.

**\* ⚠ WARNING: These chains are NOT for overhead lifting**

It is the owner's and user's responsibility to determine suitability of a product for any particular use. Remember, all web slings, assemblies, or systems are as strong as their weakest component including point of attachment.



## CHAIN BINDERS

NT CHAIN BINDERS provide great control in binding and releasing without extra tools. Handles are cast forged from quality steel and meets DOT (Department of transportation) and CVSA requirements

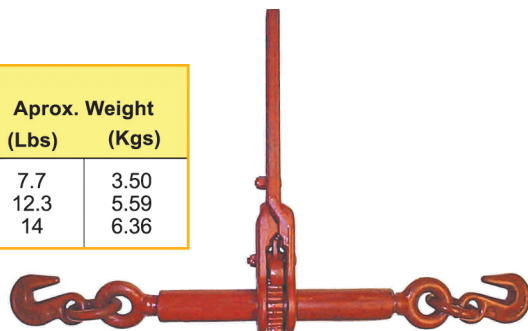
### Lever Binder



Part No.	Chain Grade & size (In)			Chain Grade & size (cm)			Working Load Limit		Aprox. Weight	
	G30	G43	G70	G30	G43	G70	(Lbs)	(Kgs)	(Lbs)	(Kgs)
60800110T01	3/8	3/8	5/16	0.95	0.95	0.79	5400	2454	7.0	3.8
60800113T01	1/2	1/2	3/8	1.27	1.27	0.95	9200	4181	10.0	4.54

### Ratchet Binder

Part No.	Chain Grade & size (In)			Chain Grade & size (cm)			Working Load Limit		Aprox. Weight	
	G30	G43	G70	G30	G43	G70	(Lbs)	(Kgs)	(Lbs)	(Kgs)
60800210T01	3/8	5/16	-	0.95	0.79	-	5400	2454	7.7	3.50
60800213T01	1/2	3/8	3/8	1.27	0.95	0.95	9200	4181	12.3	5.59
60800216T01	5/8	1/2	1/2	1.58	1.27	1.27	13200	6000	14	6.36



**\* ! WARNING** LOAD BINDING SYSTEMS STORE ENERGY WHICH CAN RELEASE SUDDENLY

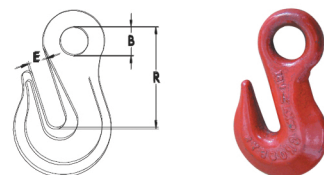
To avoid injury: · Operate only by hand from a firm standing position.  
· Operate handle cautiously. Stay clear of handle path: handle may release suddenly. Follow instructions.

## EYE HOOKS

NT EYE HOOKS are hot forged, heat treated and tempered; for excellent performance.

### Eye Grab Hooks

Grade 43 and 70 · Forged Carbon Steel  
· Forged Alloy Steel

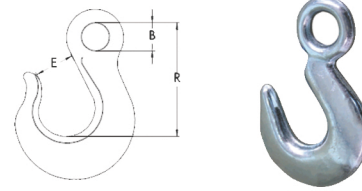


Part No. CARBON	Part No. ALLOY	Size of Chain	Working Load Limit CARBON Grade 43		Working Load Limit ALLOY Grade 70		Dimensions			Weight	
			(Lbs)	(Kgs)	(Lbs)	(Kgs)	B (inches)	E (inches)	R (inches)	(Lbs)	(Kgs)
61400106G01	61400206G01	1/4"	2.600	1.181	3.600	1.636	0.50	0.34	1.97	0.28	0.12
61400108G01	61400208G01	5/16"	3.900	1.772	5.400	2.454	0.56	0.44	2.25	0.45	0.20
61400110G01	61400210G01	3/8"	5.400	2.454	7.500	3.409	0.66	0.50	2.56	0.79	0.35
61400113G01	61400213G01	1/2"	9.200	4.181	12.750	5.795	0.88	0.66	3.38	1.80	0.81
61400116G01	61400216G01	5/8"	12.750	5.795	19.000	8.636	1.06	0.78	4.11	3.30	1.50
61400119G01	61400219G01	3/4"	18.500	8.409	27.000	12.272	1.38	0.94	5.16	6.00	2.72

It is the owner's and user's responsibility to determine suitability of a product for any particular use.  
Remember, all web slings, assemblies, or systems are as strong as their weakest component including point of attachment.

## Eye Slip Hooks

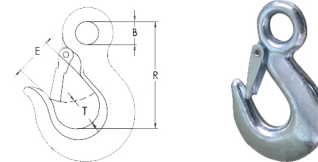
Grade 43 and 70 · Forged Carbon Steel  
· Forged Alloy Steel



Part No. CARBON	Part No. ALLOY	Size of Chain	Working Load Limit CARBON Grade 43		Working Load Limit ALLOY Grade 70		Dimensions			Weight	
			(Lbs)	(Kgs)	(Lbs)	(Kgs)	B (inches)	E (inches)	R (inches)	(Lbs)	(Kgs)
61400306G01	61400406G01	1/4"	1.950	0.886	2.750	1.250	0.50	0.94	2.56	0.40	0.18
61400308G01	61400408G01	5/16"	2.875	1.306	4.300	1.954	0.63	1.06	2.95	0.70	0.31
61400310G01	61400410G01	3/8"	4.000	1.818	5.250	2.386	0.72	1.31	3.36	1.00	0.45
61400313G01	61400413G01	1/2"	6.500	2.954	9.000	4.090	0.94	1.69	4.28	2.40	1.09
61400316G01	61400416G01	5/8"	9.250	4.204	13.500	6.136	1.13	2.00	5.22	4.00	1.81
61400319G01	61400419G01	3/4"	12.500	5.681	19.250	8.750	1.38	2.13	5.80	6.50	2.95

## Eye Slip Hooks with Latches

Grade 43 and 70 · Forged Alloy Steel  
· Forged Carbon Steel

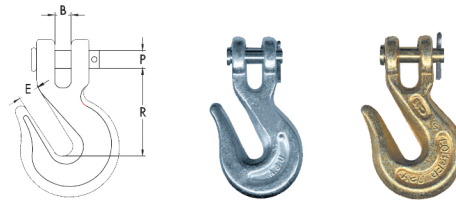


Part No. CARBON	Part No. ALLOY	Size of Chain	Working Load Limit CARBON Grade 43		Working Load Limit ALLOY Grade 70		Dimensions					Weight	
			(Lbs)	(Kgs)	(Lbs)	(Kgs)	B (inches)	E (inches)	P (inches)	R (inches)	T (inches)	(Lbs)	(Kgs)
61400506G01	61400606G01	1/4"	1.950	0.886	2.750	1.250	0.44	0.79	0.38	2.56	0.79	0.52	0.23
61400508G01	61400608G01	5/16"	2.875	1.306	4.300	1.954	0.50	0.93	0.44	2.87	0.79	0.77	0.35
61400510G01	61400610G01	3/8"	4.000	1.818	5.250	2.386	0.59	1.14	0.47	3.25	1.02	1.23	0.55
61400513G01	61400613G01	1/2"	6.500	2.954	9.000	4.090	0.75	1.42	0.63	4.00	1.38	2.85	1.29
61400516G01	61400616G01	5/8"	9.250	4.204	13.500	6.136	0.91	1.65	0.75	4.94	1.69	5.18	2.35

## CLEVIS HOOKS

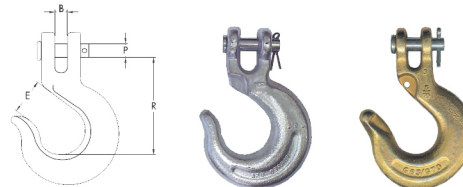
Our NT CLEVIS HOOKS are hot, heat treated and tempered;  
for excellent performance.

**Clevis Grab Hooks** Grade 43 and 70 · Forged Carbon Steel  
· Forged Alloy Steel



Part No. CARBON	Part No. ALLOY	Size of Chain	Working Load Limit CARBON Grade 43		Working Load Limit ALLOY Grade 70		Dimensions				Weight	
			(Lbs)	(Kgs)	(Lbs)	(Kgs)	B (inches)	E (inches)	P (inches)	R (inches)	(Lbs)	(Kgs)
61500106G01	61500206G01	1/4"	2.600	1.181	3.600	1.636	0.36	0.40	0.38	1.97	0.40	0.18
61500108G01	61500208G01	5/16"	3.900	1.772	5.400	2.454	0.40	0.44	0.44	2.26	0.79	0.35
61500110G01	61500210G01	3/8"	5.400	2.454	7.500	3.409	0.48	0.50	0.47	2.63	1.00	0.45
61500113G01	61500213G01	1/2"	9.200	4.181	12.750	5.795	0.75	0.66	0.63	3.19	2.10	0.95
61500116G01	61500216G01	5/8"	12.750	5.795	19.000	8.636	0.91	0.78	0.75	4.09	4.20	1.90
61500119G01	61500219G01	3/4"	18.500	8.409	27.000	12.272	0.94	0.94	0.88	4.63	6.50	2.95

**Clevis Slip Hooks** Grade 43 and 70 · Forged Carbon Steel  
· Forged Alloy Steel



Part No. CARBON	Part No. ALLOY	Size of Chain	Working Load Limit CARBON Grade 43		Working Load Limit ALLOY Grade 70		Dimensions				Weight	
			(Lbs)	(Kgs)	(Lbs)	(Kgs)	B (inches)	E (inches)	P (inches)	R (inches)	(Lbs)	(Kgs)
61500306G01	61500406G01	1/4"	1.950	0.886	2.750	1.25	0.44	0.94	0.38	2.56	0.50	0.22
61500308G01	61500408G01	5/16"	2.875	1.306	4.300	1.954	0.50	1.06	0.44	2.87	0.75	0.34
61500310G01	61500410G01	3/8"	4.000	1.818	5.250	2.386	0.59	1.31	0.47	3.25	1.20	0.54
61500313G01	61500413G01	1/2"	6.500	2.954	9.000	4.090	0.75	1.69	0.63	4.00	2.80	1.27
61500316G01	61500416G01	5/8"	9.250	4.204	13.500	6.136	0.91	2.00	0.75	4.94	4.75	2.15
61500319G01	61500419G01	3/4"	12.500	5.681	19.250	8.75	0.31	2.50	1.00	6.09	10.30	4.68

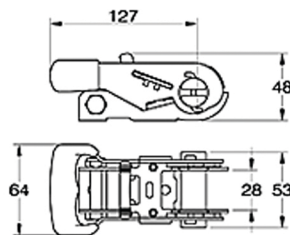
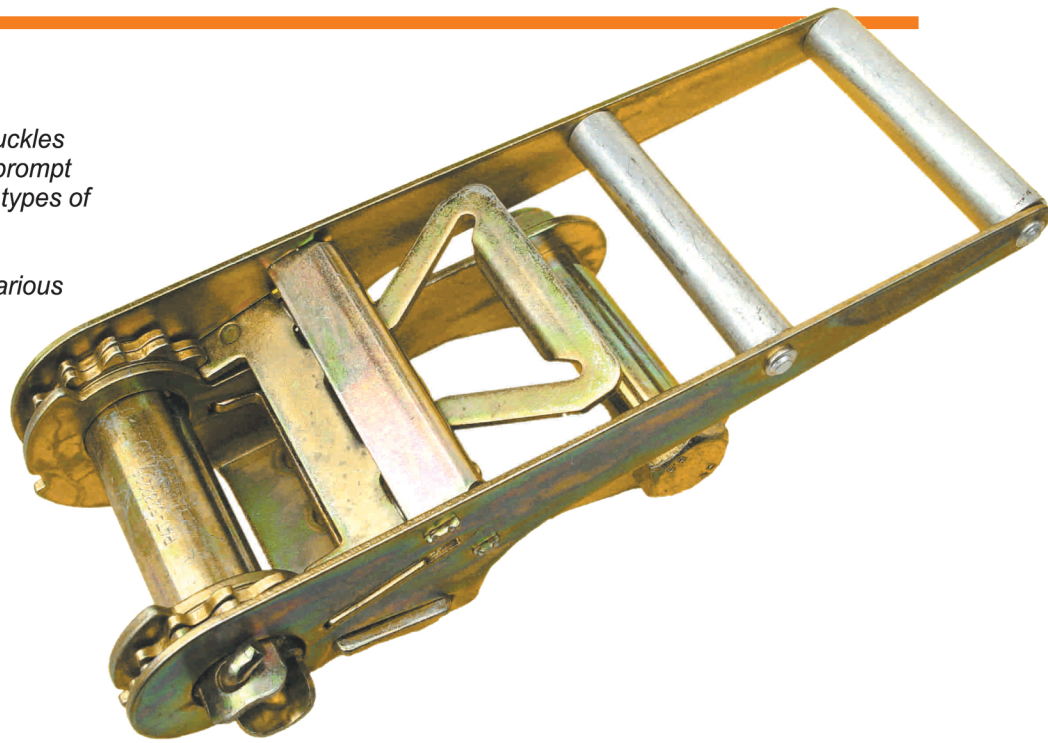
\* **WARNING:** These hooks are NOT for overhead lifting



## RATCHET BUCKLES

NT offers a complete line of ratchet buckles designed for durability, strength, and prompt release; securely locking to satisfy all types of tiedown applications.

Our ratchet buckles are available in various widths and handle configurations.



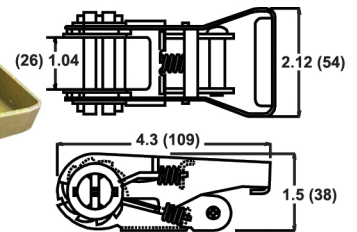
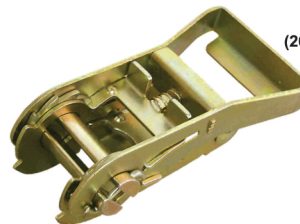
### 1-1/16" WH Ratchet with Rubber Handle

Part No. 601N0101R01

Breaking Strength: 3300 Lbs/1500 Kgs

Working Load Limit: 1100 Lbs/330 Kgs

Weigh: 0.80 Lbs/0.24 Kgs



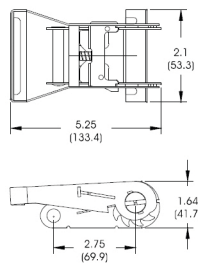
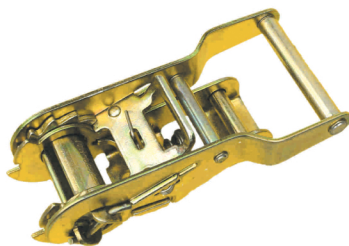
### 1" One Piece Ratchet Buckle

Part No. 60100402R01

Breaking Strength: 1500 Lbs/680 Kgs

Working Load Limit: 500 Lbs/228 Kgs

Weigh: 0.50 Lbs/0.22 Kgs



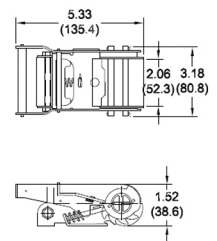
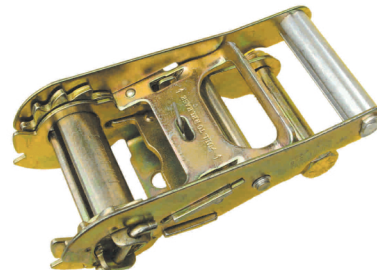
### 1" Wide Handle

Part No. 60100201R01

Breaking Strength: 3300Lbs/1500 Kgs

Working Load Limit: 1100 Lbs/500 Kgs

Weigh: 0.77 Lbs/0.22 Kgs



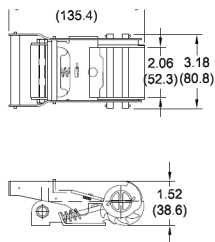
### 2" Low Breaking

Part No. 60100102R02

Breaking Strength: 4500 Lbs/2045 Kgs

Working Load Limit: 1500 Lbs/680 Kgs

Weigh: 1.01 Lbs/0.46 Kgs



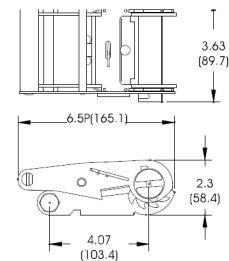
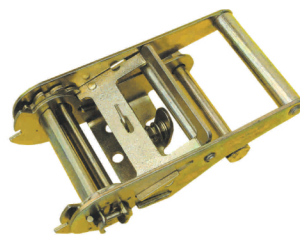
## 2" Wide Handle Low Breaking

Part No. 60100202R02

Breaking Strength: 4500 Lbs/2045 Kgs

Working Load Limit: 1500 Lbs/680 Kgs

Weight: 1.01 Lbs/0.46 Kgs



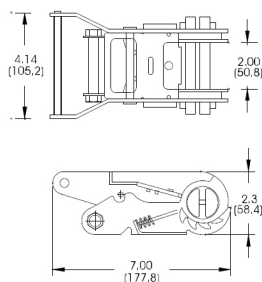
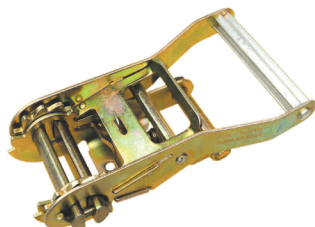
## 2" Standard Handle

Part No. 60100101R02

Breaking Strength: 11000 Lbs/5000 Kgs

Working Load Limit: 3670 Lbs/1665 Kgs

Weight: 1.94 Lbs/0.88 Kgs



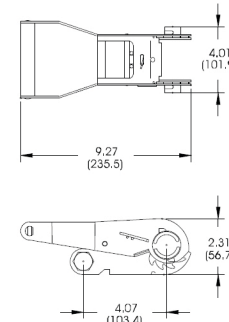
## 2" Wide Handle

Part No. 60100201R02

Breaking Strength: 11000 Lbs/5000 Kgs

Working Load Limit: 3670 Lbs/1665 Kgs

Weight: 2.27 Lbs/1.03 Kgs



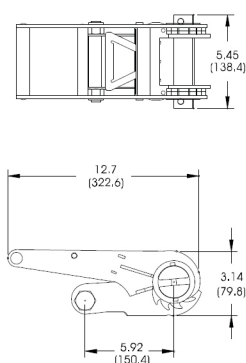
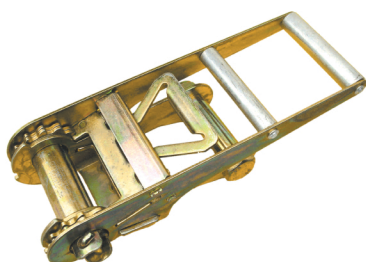
## 2" Long Wide Handle

Part No. 60100301R02

Breaking Strength: 11000 Lbs/5000 Kgs

Working Load Limit: 3670 Lbs/1665 Kgs

Weight: 2.31 Lbs/1.05 Kgs



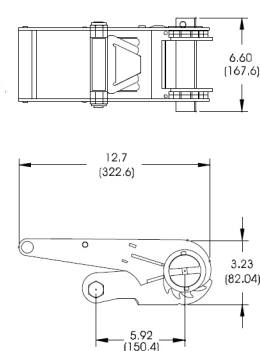
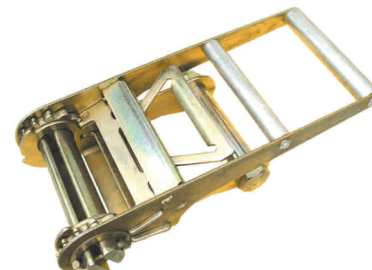
## 3" Standard Handle

Part No. 60100101R03

Breaking Strength: 17000 Lbs/7715 Kgs

Working Load Limit: 5670 Lbs/2575 Kgs

Weight: 6.41 Lbs/2.91 Kgs



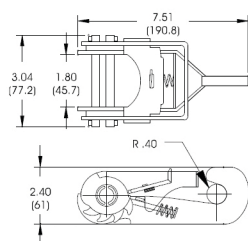
## 4" Standard Handle

Part No. 60100101R04

Breaking Strength: 24000 Lbs/10896 Kgs

Working Load Limit: 8000 Lbs/3630 Kgs

Weight: 8.02 Lbs/3.64 Kgs



## 2" Standard Handle with Single Hook

Part No. 60100103R02

Breaking Strength: 6600 Lbs/3000 Kgs

Working Load Limit: 2200 Lbs/1000 Kgs

Weight: 1.63 Lbs/0.74 Kgs



## WIRE HOOKS

*Our hooks are made to last. However, selection and proper use are important for durability and safety.*



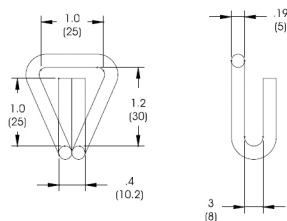
**1" Wire Hook 500**

**Part No. 60500101G01**

**Breaking Strength:** 500 Lbs/227 Kgs

**Working Load Limit:** 166 Lbs/75 Kgs

**Weigh:** 0.04 Lbs/0.02 Kgs



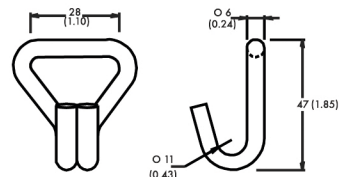
**1" Wire Hook 1500**

**Part No. 60500102G01**

**Breaking Strength:** 1500 Lbs/680 Kgs

**Working Load Limit:** 500 Lbs/226 Kgs

**Weigh:** 0.11 Lbs/0.06 Kgs



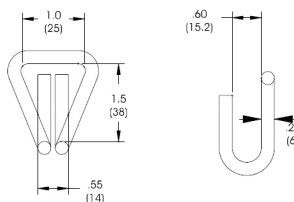
**1" Wire Hook 3000**

**Part No. 60500103G01**

**Breaking Strength:** 3000 Lbs/ 1363 Kgs

**Working Load Limit:** 1000 Lbs/454 Kgs

**Weigh:** 0.15 Lbs/0.07 Kgs



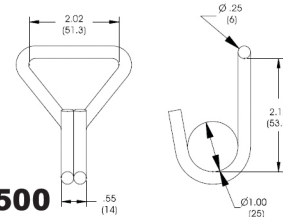
**2" Wire Hook 1500**

**Part No. 60500101G02**

**Breaking Strength:** 1500 Lbs/681 Kgs

**Working Load Limit:** 500 Lbs/230 Kgs

**Weigh:** 0.19 Lbs/0.09 Kgs



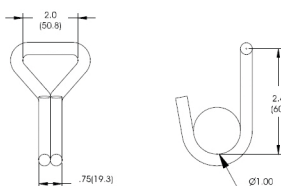
**2" Wire Hook 5000**

**Part No. 60500102G02**

**Breaking Strength:** 5000 Lbs/ 2270 Kgs

**Working Load Limit:** 1670 Lbs/760 Kgs

**Weigh:** 0.40 Lbs/0.18 Kgs



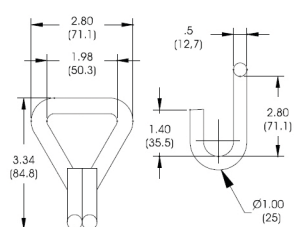
**2" Wire Hook 11000**

**Part No. 60500103G02W**

**Breaking Strength:** 11000 Lbs/5000 Kgs

**Working Load Limit:** 3333 Lbs/1575 Kgs

**Weigh:** 0.50 Lbs/0.23 Kgs



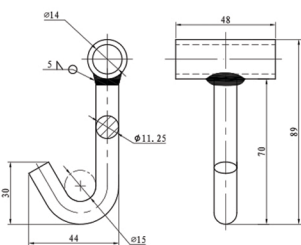
**2" Single Wire Hook 6000**

**Part No. 60500104G02**

**Breaking Strength:** 6000 Lbs/2727 Kgs

**Working Load Limit:** 2000 Lbs/909 Kgs

**Weigh:** 0.30 Lbs/0.15 Kgs



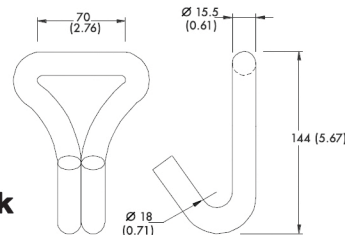
**3" Wire Hook 22000**

**Part No. 60500101G03**

**Breaking Strength:** 22000 Lbs/ 10000 Kgs

**Working Load Limit:** 7333 Lbs/3333 Kgs

**Weigh:** 0.96 Lbs/0.43 Kgs



## SNAP HOOKS

*Our hooks are made to last. However, selection and proper use are important for durability and safety.*



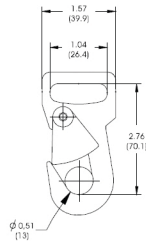
### 1" Snap Hook

**Part No. 60500401G01**

**Breaking Strength:** 5000 Lbs/2270 Kgs

**Working Load Limit:** 1666 Lbs/757 Kgs

**Weight:** 0.21 Lbs/0.10 Kgs



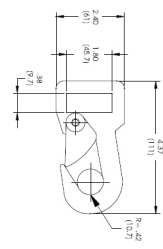
### 2" Snap Hook 6000

**Part No. 60500401G02**

**Breaking Strength:** 6300 Lbs/2863 Kgs

**Working Load Limit:** 2100 Lbs/954 Kgs

**Weight:** 0.32 Lbs/0.15 Kgs



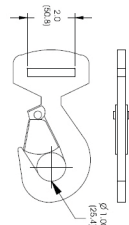
### 2" Snap Hook 10000

**Part No. 60500402G02**

**Breaking Strength:** 10000 Lbs/4540 Kgs

**Working Load Limit:** 3333 Lbs/ 1515 Kgs

**Weight:** 0.69 Lbs/0.31 Kgs



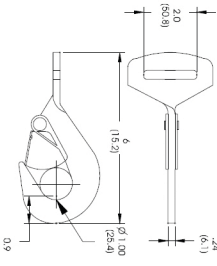
### 2" Twisted Snap Hook

**Part No. 60500501G02**

**Breaking Strength:** 10000 Lbs/4540 Kgs

**Working Load Limit:** 3333 Lbs/1515 Kgs

**Weight:** 0.70 Lbs/0.32 Kgs



## GRAB AND CHAIN ANCHOR HOOKS

*Our hooks are made to last. However, selection and proper use are important for durability and safety.*



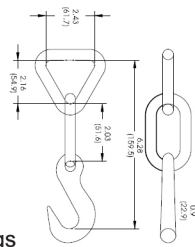
### 2" Grab Hook

**Part No. 60500601G02**

**Breaking Strength:** 12000 Lbs/4000 Kgs

**Working Load Limit:** 5350 Lbs/2430 Kgs

**Weight:** 1.27Lbs/0.58 Kgs



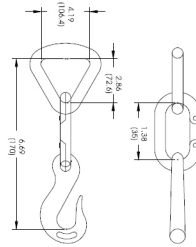
### 4" Grab Hook

**Part No. 60500601G04**

**Breaking Strength:** 16200 Lbs/7350 Kgs

**Working Load Limit:** 5400 Lbs/2454 Kgs

**Weight:** 2.44 Lbs/1.11 Kgs



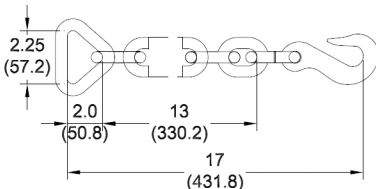
### 2" Chain Anchor

**Part No. 60500701G02**

**Breaking Strength:** 16200 Lbs/7363 Kgs

**Working Load Limit:** 5400 Lbs/2454 Kgs

**Weight:** 2.22 Lbs/ 1.01 Kgs



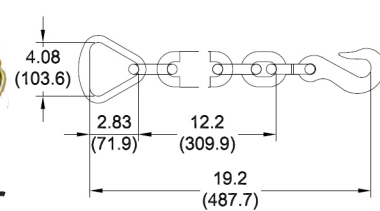
### 4" Chain Anchor

**Part No. 60500701G04**

**Breaking Strength:** 16200 Lbs/7363 Kgs

**Working Load Limit:** 5400 Lbs/2454 Kgs

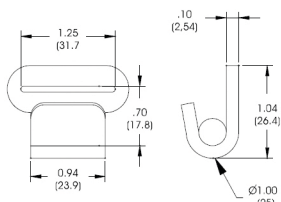
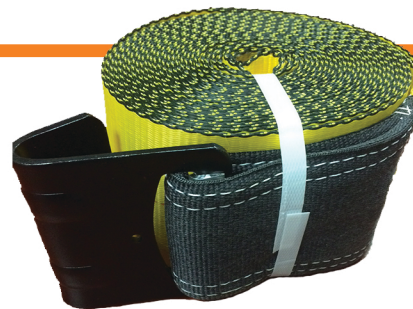
**Weight:** 4.23 Lbs/ 1.92 Kgs





## FLAT HOOKS

Our hooks are made to last. However, selection and proper use are important for durability and safety.



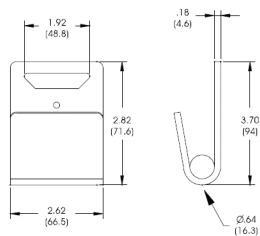
### 1" Flat Hook

Part No. 605N0201G01

Breaking Strength: 700 Lbs/320 Kgs

Working Load Limit: 235Lbs/110 Kgs

Weigh: 0.04 Lbs/0.02 Kgs



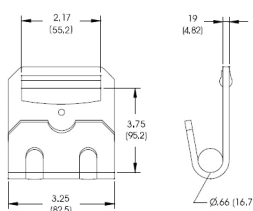
### 2" Flat Hook with Aluminum Wear Pad

Part No. 605N0201G02

Breaking Strength: 10000 Lbs/4540 Kgs

Working Load Limit: 3333 Lbs/1515 Kgs

Weigh: 0.68 Lbs/0.31 Kgs



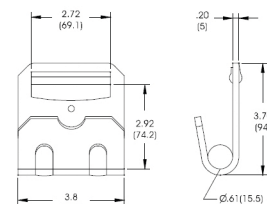
### 3" Flat Hook with Aluminum Wear Pad

Part No. 605N0201G03

Breaking Strength: 15000 Lbs/6805 Kgs

Working Load Limit: 5000 Lbs/2270 Kgs

Weigh: 0.98 Lbs/0.45 Kgs



### 4" Flat Hook with Aluminum Wear Pad

Part No. 605N0201G04

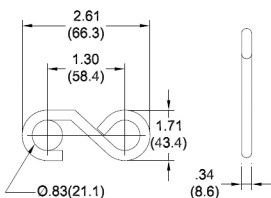
Breaking Strength: 16200 Lbs/7350 Kgs

Working Load Limit: 5400 Lbs/2450 Kgs

Weigh: 1.16 Lbs/0.53 Kgs

## VINYL S HOOKS

Our hooks are vinyl coated.



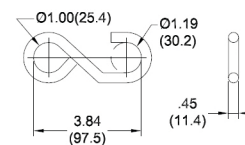
### 1" Vinyl S Hook 1200

Part No. 605N0301G01

Breaking Strength: 500 Lbs/230 Kgs

Working Load Limit: 170 Lbs/80 Kgs

Weigh: 0.17 Lbs/0.08 Kgs



### 1" Vinyl S Hook 3000

Part No. 605N0302G01

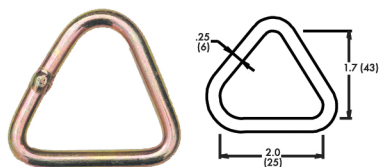
Breaking Strength: 3000 Lbs/1000 Kgs

Working Load Limit: 1000 Lbs/330 Kgs

Weigh: 0.34 Lbs/0.16 Kgs

## RINGS

Our hooks are made to last. However, selection and proper use are important for durability and safety.



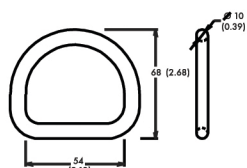
### 2" Delta Ring 5000

Part No. 60400101D02  
**Breaking Strength:** 5000 Lbs/2272 Kgs  
**Working Load Limit:** 1666 Lbs/757 Kgs  
**Weight:** 0.09 Lbs/0.04 Kgs



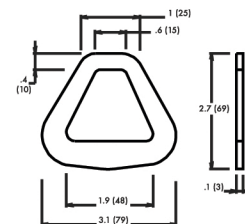
### 2" O-Ring 10000

Part No. 60400104D02  
**Breaking Strength:** 10000 Lbs/4545 Kgs  
**Working Load Limit:** 3333 Lbs/1513 Kgs  
**Weight:** 0.25 Lbs/0.12 Kgs



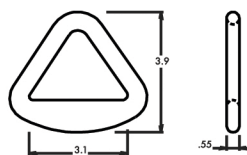
### 2" Flat Delta Ring

Part No. 60400201D02  
**Breaking Strength:** 10000 Lbs/4545 Kgs  
**Working Load Limit:** 3333 Lbs/1513 Kgs  
**Weight:** 0.28 Lbs/0.13 Kgs



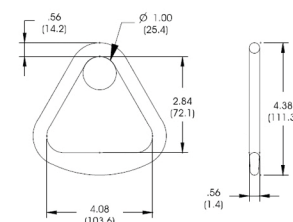
### 3" Delta Ring

Part No. 60400301D03  
**Breaking Strength:** 18000 Lbs/8181 Kgs  
**Working Load Limit:** 6000 Lbs/2727 Kgs  
**Weight:** 1.05 Lbs/0.48 Kgs



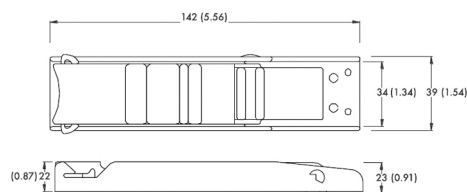
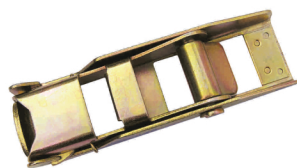
### 4" Delta Ring

Part No. 60400301D04  
**Breaking Strength:** 20000 Lbs/9090 Kgs  
**Working Load Limit:** 6666 Lbs/3030 Kgs  
**Weight:** 1.26 Lbs/0.57 Kgs



## OVERCENTER BUCKLE

We offer a wide variety of overcenter buckles for one and two inches in steel or stainless steel.



### 1" Overcenter Buckle

Part No. 60300202B01  
**Breaking Strength:** 3000 Lbs/1363 Kgs  
**Working Load Limit:** 1000 Lbs/454 Kgs  
**Weight:** 0.50 Lbs/0.25 Kgs

### 2" Overcenter Buckle SS

Part No. 60300302B02  
**Breaking Strength:** 5280 Lbs/2400 Kgs  
**Working Load Limit:** 1760 Lbs/800 Kgs  
**Weight:** 0.46 Lbs/0.23 Kgs



## SLINGS TYPE I AND II

Our Type I and II web slings are manufactured with high quality steel or aluminum hardware, as per customer requirements.

We can also use any type of master links.



### TYPE I WEB SLING

Web sling with triangle hardware in one end, and triangle with opening in the other end allowing you to operate the sling in choker hitch lift. Could also be used in vertical and basket hitch lifts.



### TYPE II WEB SLING

Web sling with simple triangle hardware in both ends. It can only be used in vertical and basket hitch lifts

Width		Number of Plies	Working Load Limit (Lbs)			Working Load Limit(Kgs)		
mm	inches		vertical	choker	basket	vertical	choker	basket
50	2	1	2.400	1.920	4.800	1.090	870	2.180
		2	4.800	3.840	9.600	2.180	1.740	4.360
		3	6.500	5.200	13.000	2.950	2.360	5.900
75	3	1	3.600	2.880	7.200	1.630	1.300	3.260
		2	7.200	5.760	14.400	3.260	2.600	6.520
		3	9.700	7.760	19.400	4.400	3.520	8.800
100	4	1	4.800	3.840	9.600	2.180	1.740	4.360
		2	9.600	7.680	19.200	4.360	3.490	8.720
		3	12.900	10.320	25.800	5.850	4.680	11.700
125	5	1	7.200	5.760	14.400	3.270	2.610	6.540
		2	13.800	11.040	27.600	6.260	5.000	12.520
		3	19.400	15.520	38.800	8.800	7.040	17.600

1. Polyester web class 98
2. Coated for better friction performance
3. Protections by requirement
4. Low elongation

Security Factor 5:1

## SLINGS TYPE III AND IV

Type III and IV web slings are also known as eye and eye. Type III sling has flat eyes, which permit the use of any type of hitch, and facilitates the operation in narrow places.

Type IV sling has twisted eyes that allows it to always be open. This is very important for choker hitch lifts, because it permits a fast and easy positioning of the eye on the hoist hooks. It is also used when the application generates torque force in the sewing point.

The reversed eye protects from damage caused by the torque force.



### TYPE III SLING

Manufactured with flat eyes in each end that open in the same direction of the fabric. This type of sling is also known as flat eye sling, eye and eye sling, or double eye sling.



### TYPE IV SLING

This type is built as same as type III, only with the difference of the eyes are half twisted. This sling is also known as a twisted eye sling.

Width		Number of Plies	Working Load Limit (Lbs)			Working Load Limit(Kgs)		
mm	inches		vertical	choker	basket	vertical	choker	basket
50	2	1	3.200	2.560	6.400	1.450	1.160	2.900
		2	6.400	5.120	12.800	2.900	1.310	5.800
		3	8.600	6.880	17.200	3.900	3.120	7.800
75	3	1	4.800	3.840	9.600	2.180	1.740	4.360
		2	8.600	6.880	17.200	3.900	3.120	7.800
		3	12.900	10.320	25.800	5.850	4.680	11.700
100	4	1	6.400	5.120	12.800	2.900	2.320	5.800
		2	11.400	9.120	22.800	5.170	4.130	10.340
		3	17.200	13.760	34.400	7.800	6.240	15.600
125	5	1	8.000	6.400	16.000	3.630	2.900	7.260
		2	14.200	11.360	28.400	6.440	5.150	12.880
		3	21.600	17.280	43.200	9.800	7.840	19.600

1. Polyester web class 98
2. Coated for better friction performance
3. Protections by requirement
4. Low elongation

Security Factor 5:1



## SLINGS TYPE V ENDLESS

Type V Endless slings are the most versatile type, lasting longer because the contact points can be rotated to prevent excessive abrasion. They can be used in choker, vertical and basket hitches.



Width		Number of Plies	Working Load Limit (Lbs)			Working Load Limit(Kgs)		
mm	inches		vertical	choker	basket	vertical	choker	basket
50	2	1	6.400	5.120	12.800	2.900	2.320	5.800
		2	12.500	14.090	25.000	5.670	4.530	11.340
		3	17.200	13.760	34.400	7.800	6.240	15.600
75	3	1	9.600	8.640	19.200	4.360	3.490	8.720
		2	17.500	15.750	35.000	7.940	6.350	15.880
		3	25.900	20.720	51.800	11.760	9.400	23.520
100	4	4	34.000	27.200	68.000	15.430	12.340	30.860
		1	12.500	10.000	25.000	5.670	4.530	11.340
		2	23.500	18.800	47.000	10.670	8.530	21.340
125	5	3	33.700	26.960	67.500	15.300	12.240	30.600
		4	45.000	36.000	90.000	20.430	16.340	40.860
		1	15.500	12.400	31.000	7.040	5.630	14.080
125	5	2	27.000	21.600	54.000	12.260	9.800	24.520
		3	43.000	34.440	86.000	19.520	15.610	39.040
		4	52.000	41.600	104.000	23.600	18.880	47.200

1. Polyester web class 98
2. Coated for better friction performance
3. Protections by requirement
4. Low elongation

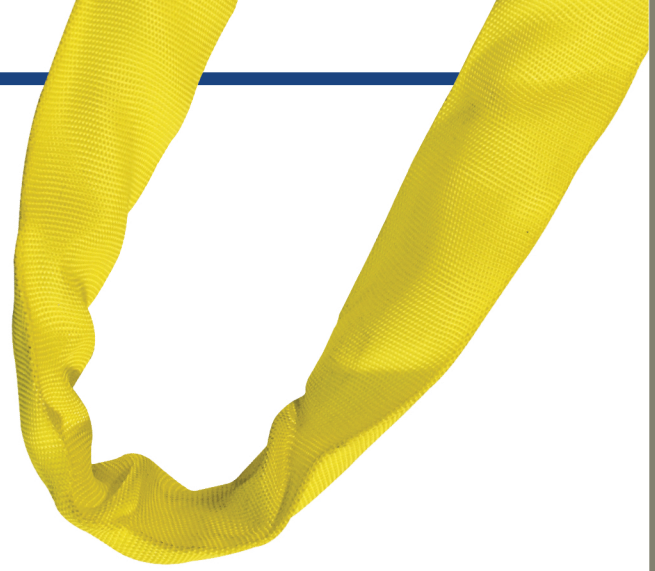
**Security Factor 5:1**

## ROUND SLINGS

NT round slings are made with continuous loop polyester internal yarn, covered by a tubular protective jacket. It is recommended to use them when the load must be highly protected from damage caused by the lifting operation.

NT round slings are low stretching (around 3% elongation). Reduces sling and load abrasion also lightweight and high flexibility.

NT round slings are manufactured in accordance with the color code DIN-EN 1492-1.



Color Code	Working Load Limit (Lbs)		Basket Capacity (Lbs)			Weight Lbs per Ft.	Body Diameter
	vertical	choker	90°	60°	45°		
Purple	2650	2120	5300	4500	3600	.18	.50
Black	4000	3200	8000	6900	5600	.27	.50
Green	5300	4240	10600	9100	7400	.30	.80
Yellow	8400	6720	16800	14500	11800	.37	1.10
Tan	10600	8500	21200	18300	14900	.50	1.20
Red	13200	10560	26400	22800	18600	.60	1.40
White	16800	13400	33600	29000	23750	.90	1.60
Blue	21200	17000	42400	36700	29900	1.15	1.80





## SCOPE

Tiedown criteria applies to the devices used in securing loads to commercial flatbeds used for cargo transportation .

## IMPORTANT DEFINITIONS

**Tiedown Material:** Synthetic webbing

**Fittings Attachments:** Devices used with or in tiedowns for purposes of attachment or tensioning.

**Anchor Point:** The location on a flatbed where a tiedown is attached.

**Minimum Breaking Strength:** The minimum straight tensile load or force at which the tiedown assembly fails to support the load.

**Working Load Limit (WLL):** The WLL load is the maximum load which shall be applied. The industry recommends for safety that WLL not exceed 1/3 of the minimum breaking strength of the assembly.

## RATED LOAD CAPACITY

Ratings are generally established and/or regulated by industry or legislative standards and may vary from industry to industry.

**It is the owner's and user's responsibility to determine suitability of product for any particular use. Check all applicable industry, trade association, federal, state, and local regulations. Read all operating instructions and warnings carefully. Failure to comply with recommended usage guidelines may result in personal injury or cargo damage.**

All ratings in this catalog are based in products being new, and used in normal environment conditions.

It is important to notice that the component with the lowest breaking strength capacity in the entire restraint system will probably fail first. Each component plays an important part in restraining cargo, therefore, it is important that tiedowns be attached to components that are of sufficient strength to properly secure the load.

## CALCULATION

US Department of Transportation regulations requires that: The aggregate working load limit of the tiedown assemblies used to secure an article against movement in any direction must be at least 0.5 times the weight of the article.

$$NT = (\text{load}) (.5) / WLL$$

NT = Number of tiedowns

Load = Weight of load to be secure

WLL = Working load limit of tiedowns

**Example:** Determine the number of tiedown assemblies required for an article to be secure with a weight of 40,000 lbs; using 4 inch synthetic web tiedowns with a WLL of 5,000 lbs.

$$NT = (40,000) (.5) / 5,000 = 4 \text{ tiedowns}$$

A minimum of 4 synthetic web tiedowns are required to secure the article, based only on the weight consideration .

Factors to be considered when determining the number and location of synthetic tiedowns, as specified by state, federal, local and industry regulations are:

- Article weight
- Configuration of load (Coil, Equipment, Pipes, etc.)
- Number of tiers
- Length of load to be secure
- Minimum number of tiedowns required takes, Blocking and Bracing
- Tension on the tiedown shall never exceed WLL
- Strength rating of anchorage
- Any other factors that may affect safe securement of the load

## USE AND CARE

The principal guidelines for care, use and inspection of synthetic web tiedown assemblies are:

- Determine weight of the cargo to be secure, including expected dynamic "G" forces.
  - Select synthetic web tiedown assembly having suitable characteristics for the type of load and environment.
  - Determine Working Load Limit (WLL) of the selected tiedown assembly, taking in consideration that WLL is the maximum load which shall be applied.
  - Web tiedown WLL rating is a maximum of 1/3 of the minimum breaking strength of the assembly.
  - Synthetic web tiedown assemblies shall not be loaded in excess of the WLL . Consideration should be given to the angle from the vertical (cargo tiedown to the load angle) which affects WLL capacity.
  - Synthetic tiedown assemblies shall be attached to provide control of the load and positioned in accordance with applicable regulations.
  - Synthetic tiedown assemblies shall not be dragged on the floor, ground, or over an abrasive surface.
  - Synthetic tiedown assemblies shall not be tied in knots, or joined by knotting
  - Synthetic tiedown assemblies shall not be pulled from under loads when the load is resting on the tiedown .
  - Synthetic tiedown assemblies shall always be protected from being cut by sharp corners, sharp edges, protrusions of abrasive surfaces .
  - Synthetic tiedown assemblies with fittings shall not be dropped.
  - Synthetic tiedown assemblies shall not be used for lifting.
  - The opening in fittings shall have the required shape and size to insure that the fitting will sit properly in the vehicle anchorage or other attachment. If the anchorage is inadequate to support the rating of the tiedown assembly, then the load rating will be limited to the strength of the anchorage
  - Before operating any tiedown assembly the user shall secure his footing to prevent slipping or falling.
  - In freezing temperatures caution shall be exercised when operating frozen tiedown assemblies.
  - When tightening or loosening winches, always maintain a firm grip on the winch bar.
  - Never release a winch bar without checking the pawl to ensure that is fully engaged between ratchet teeth. This can cause serious injury to the user or bystanders.
  - The use of a slip resistant handle winch bar specially designed to tighten or loosen winches is recommended. Only winch bars designed to be used with winches shall be used to tension or release tiedown assemblies .
  - The use of "cheater bars" or other means of increasing leverage on a ratchet buckle handle or winch, other than a NT approved device, can cause serious injury to the user or bystanders.
- E-TRACK FITTINGS 18**
- Synthetic web tiedowns shall be used, checked and adjusted during the transportation of cargo per applicable federal, state provincial, local and industry regulations.
  - Synthetic tiedown assemblies should be stored in a dry and dark place, and should not be exposed to sunlight when not in use.
  - Chemically active environments can affect the strength of synthetic web tiedown assemblies in varying degrees ranging from little to total degradation. Manufacturer should be consulted before they are used or stored in chemically active environments .
  - Synthetic tiedown assemblies shall not be used at temperatures in excess of 194 degrees F (90 degrees C). They can be used in temperatures as low as -40 degrees F ( -40 degrees C).
  - Synthetic tiedown assemblies incorporating aluminium fittings shall not be used where fumes, vapors, sprays mists or liquids of alkalis and or acids are present.
  - Environments in which synthetic tiedown assemblies are continuously exposed to ultra-violet light can affect the strength in varying degrees ranging from slight to total degradation
  - Visual indications of possible ultra-violet degradation are: bleaching out of webbing, increased stiffness of webbing material and surface abrasion in areas not normally in contact with the load.
  - Synthetic tiedown assemblies are subjected to dirt, mud, snow, ice, road salt, cleaning solutions, etc., and therefore require inspection, cleaning and lubricating, as applicable, to ensure they are always in operating condition prior to each use.
  - Before any synthetic tiedown assembly is placed in service it shall be inspected to insure that the correct assembly meets the requirements of this specification .
  - Frequent inspection shall be made by the person handling the assembly each time it is used.
  - Periodic inspection shall be conducted by designated personell, based on: frequency of use and severity of service condition. Inspection should be conducted at least monthly.
  - Synthetic tiedown assemblies inspection records should be established by the user.
  - No repairs of webbing, fittings or stitching shall be permitted.

## DAMAGED SYNTHETIC TIEDOWN ASSEMBLIES

Synthetic tiedown assemblies shall be removed from service if any damages, such as the following are visible:

- Holes, tears, cuts and snags.
- Broken or worn stitching in load bearing sew patterns.
- Excessive abrasive wear.
- Knots in the tiedown.
- Melting or charring of the tiedown or weld splatter on the tiedown.
- Chemical burns.
- Damaged loop. Eye-hook too small or too rough.
- Tear in webbing at fitting.
- Other apparent damages that may affect strength ratings, such as crushed webbing.

## WARNING

Department of Transportation FMCSA Regulations require that:

392.9 b2 Inspect the cargo and the devices used to secure the cargo within the first 50 miles after beginning a trip and cause any adjustments to be made to the cargo or load securement devices as necessary, including adding more securement devices, to ensure that cargo cannot shift on or within, or fall from the commercial motor vehicle; and

392.9 b3 Reexamine the commercial motor vehicle's cargo and its load securement devices during the course of transportation and make any necessary adjustment to the cargo or load securement devices, including adding more securement devices, to ensure that cargo cannot shift on or within, or fall from, the commercial motor vehicle. Reexamination and any necessary adjustments must be made whenever—

- (i) The driver makes a change of his/her duty status; or
- (ii) The commercial motor vehicle has been driven for 3 hours; or
- (iii) The commercial motor vehicle has been driven for 150 miles, whichever occurs first.

## LIMITED WARRANTY

NT products are warranted for a period of three (3) months from date of shipment to be free from defects in material or workmanship. Any products to be defective in material or workmanship within the warranty period will be repaired or replaced.

This warranty does not extend to any product which has been subjected to misuse, abuse, accident, negligence, exposure to the elements or chemicals, alteration or unauthorized repair. Upon notification that a product has been found to be defective, NT will advise to which location the product should be returned via freight prepaid.

**THIS LIMITED WARRANTY IS IN LIEU OF ALL OTHER WARRANTIES EXPRESSED OR IMPLIED, INCLUDING BUT NOT LIMITED TO ANY IMPLIED WARRANTY OF MERCHANTABILITY OR FITNESS FOR ANY PARTICULAR PURPOSE. IN NO EVENT WILL THE COMPANY BE LIABLE FOR SPECIAL, INDIRECT OR CONSEQUENTIAL DAMAGE OR LOSS OF VEHICLE, CARGO OR PROFITS.**

For more information please contact:

**US Department of Transportation (DOT)  
Federal Highway Administration (FHWA)**  
1200 New Jersey Ave., SE  
Washington, DC 20590  
Phone (202) 366-4000  
[www.fhwa.dot.gov](http://www.fhwa.dot.gov)

**California Highway Patrol (CHP)**  
601 North 7th Street  
Sacramento, CA 95811  
Phone (916) 843-3000  
[www.chp.ca.gov](http://www.chp.ca.gov)

**Commercial Vehicle Safety Alliance (CVSA)**  
Cargo Securement Tie-Down Guidelines  
6303 Ivy Lane, Suite 310  
Greenbelt, Maryland 20770  
Phone (301) 830-6143  
[www.cvsa.org](http://www.cvsa.org)

**Web Sling & Tie Down Association (WSTDA)**  
9 Newport Drive, Suite 200  
Forest Hill, MD 21050  
Phone (443) 640-1070  
[www.wstda.com](http://www.wstda.com)

**Specialized Carriers & Rigging Association (SC&RA)**  
5870 Trinity Parkway  
Suite 200  
Centreville, VA 20120  
Phone (703) 698-0291  
[www.scranet.org](http://www.scranet.org)

**CANADA**  
The Ministry of Transportation  
[www.mto.gov.on.ca](http://www.mto.gov.on.ca)

**MEXICO**  
Dirección General de Autotransporte Federal  
Calzada de las Bombas, No. 411  
3ro, 4to, 5to y 11vo Piso  
Col. Girasoles, C.P. 04920  
México, Distrito Federal



NT OF AMERICA CORP.

THE MOST IMPORTANT THING IS TO ENCOURAGE YOUR TEAM TO WORK VERY HARD IN ORDER TO GO THE EXTRA MILE AND FOCUS ON CUSTOMER SATISFACTION. ALWAYS DEMAND THE BEST OF YOURSELF CONVINCED THAT LEARNING NEVER ENDS, YOUR EFFORT WILL BE RECOGNIZED.

IN A SPECIAL WAY, I WANT TO ALSO THANK ALL OF OUR NT OF AMERICA TEAM MEMBERS FOR THEIR COMMITMENT AND DEDICATION. I'M VERY PLEASED TO RECEIVE THIS AWARD ON THEIR BEHALF. THIS PLAQUE IS ALSO THE RESULT OF OUTSTANDING TEAMWORK AND THE ACTIVE PARTICIPATION OF OUR SUPPLIERS. ALL OF THAT HAS ALLOWED US TO DELIVER GOODS AND SERVICES WITH EXCELLENCE FOR THE SATISFACTION OF OUR CLIENTS, **BECAUSE THEY ARE THE REASON WHY WE ARE HERE.**

Visit our website at:  
[www.ntofamerica.us](http://www.ntofamerica.us)



**NT TIEDOWNS**

NT-Tiedowns is a registered trademark